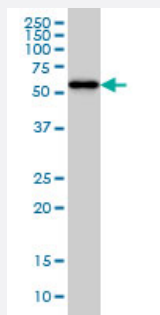


CPNE1 monoclonal antibody (M01), clone 8B8

Catalog # H00008904-M01

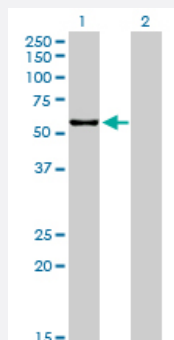
Size 100 ug

Applications



Western Blot (Cell lysate)

CPNE1 monoclonal antibody (M01), clone 8B8 Western Blot analysis of CPNE1 expression in HeLa (Cat # L013V1).

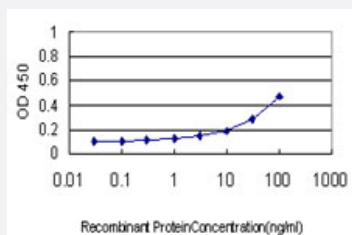


Western Blot (Transfected lysate)

Western Blot analysis of CPNE1 expression in transfected 293T cell line by CPNE1 monoclonal antibody (M01), clone 8B8.

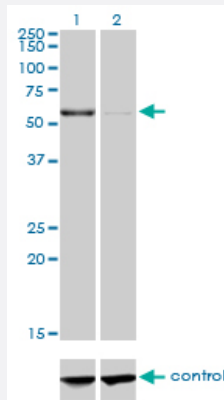
Lane 1: CPNE1 transfected lysate(59.1 KDa).

Lane 2: Non-transfected lysate.



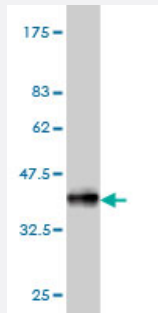
Sandwich ELISA (Recombinant protein)

Detection limit for recombinant GST tagged CPNE1 is approximately 1ng/ml as a capture antibody.



RNAi Knockdown (Antibody validated)

Western blot analysis of CPNE1 over-expressed 293 cell line, cotransfected with CPNE1 Validated Chimera RNAi (Cat # H00008904-R01V) (Lane 2) or non-transfected control (Lane 1). Blot probed with CPNE1 monoclonal antibody (M01), clone 8B8 (Cat # H00008904-M01). GAPDH (36.1 kDa) used as specificity and loading control.



Western Blot detection against Immunogen (36.74 KDa) .

Specification

Product Description	Mouse monoclonal antibody raised against a partial recombinant CPNE1.
Immunogen	CPNE1 (NP_003906, 111 a.a. ~ 210 a.a) partial recombinant protein with GST tag. MW of the GST tag alone is 26 KDa.
Sequence	TLPLMLKPGKPAGRGTTIVSAQELKDNRVVTMEVEARNLDKKDFLGKSDPFLEFFRQGDGKWHL VYRSEVIKNNLNPTWKRFSVPVQHFCGGNPSTPIQV
Host	Mouse
Reactivity	Human
Interspecies Antigen Sequence	Mouse (91); Rat (91)
Isotype	IgG2a Kappa
Quality Control Testing	Antibody Reactive Against Recombinant Protein. Western Blot detection against Immunogen (36.74 KDa) .
Storage Buffer	In 1x PBS, pH 7.4
Storage Instruction	Store at -20°C or lower. Aliquot to avoid repeated freezing and thawing.

Applications

- Western Blot (Cell lysate)

CPNE1 monoclonal antibody (M01), clone 8B8 Western Blot analysis of CPNE1 expression in HeLa (Cat # L013V1).

[Protocol Download](#)

- Western Blot (Transfected lysate)

Western Blot analysis of CPNE1 expression in transfected 293T cell line by CPNE1 monoclonal antibody (M01), clone 8B8.

Lane 1: CPNE1 transfected lysate(59.1 KDa).

Lane 2: Non-transfected lysate.

[Protocol Download](#)

- Western Blot (Recombinant protein)

[Protocol Download](#)

- Sandwich ELISA (Recombinant protein)

Detection limit for recombinant GST tagged CPNE1 is approximately 1ng/ml as a capture antibody.

[Protocol Download](#)

- ELISA

- RNAi Knockdown (Antibody validated)

Western blot analysis of CPNE1 over-expressed 293 cell line, cotransfected with CPNE1 Validated Chimera RNAi (Cat # H00008904-R01V) (Lane 2) or non-transfected control (Lane 1). Blot probed with CPNE1 monoclonal antibody (M01), clone 8B8 (Cat # H00008904-M01). GAPDH (36.1 kDa) used as specificity and loading control.

[Protocol Download](#)

Gene Info — CPNE1

Entrez GeneID	8904
---------------	----------------------

GeneBank Accession#	NM_003915
---------------------	---------------------------

Protein Accession#	NP_003906
--------------------	---------------------------

Gene Name	CPNE1
-----------	-------

Gene Alias	COPN1, CPN1, MGC1142
------------	----------------------

Gene Description	copine I
Omim ID	604205
Gene Ontology	Hyperlink
Gene Summary	<p>Calcium-dependent membrane-binding proteins may regulate molecular events at the interface of the cell membrane and cytoplasm. This gene encodes a calcium-dependent protein that also contains two N-terminal type II C2 domains and an integrin A domain-like sequence in the C-terminus. However, the encoded protein does not contain a predicted signal sequence or transmembrane domains. This protein has a broad tissue distribution and it may function in membrane trafficking. This gene and the gene for RNA binding motif protein 12 overlap at map location 20q11.21. Alternate splicing results in multiple transcript variants encoding different proteins. [provided by RefSeq]</p>
Other Designations	OTTHUMP00000030775 OTTHUMP00000030776 copine-1