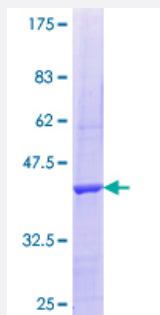


PRPF4B (Human) Recombinant Protein (Q02)

Catalog # H00008899-Q02

Size 25 ug, 10 ug

Applications



Specification

Product Description	Human PRPF4B partial ORF (NP_003904.2, 898 a.a. - 1005 a.a.) recombinant protein with GST-tag at N-terminal.
Sequence	LKLAMD LKGKMPNKMIRKGVFKDQHFDQNLNFMYEVDKVTREKVTVMSTINPTKDLLADLIGCQ RLPEDQRKKVHQLKDLLDQILMLDPAKRISINQALQHAFIQE
Host	Wheat Germ (in vitro)
Theoretical MW (kDa)	37.62
Interspecies Antigen Sequence	Mouse (95); Rat (95)
Preparation Method	in vitro wheat germ expression system
Purification	Glutathione Sepharose 4 Fast Flow
Quality Control Testing	12.5% SDS-PAGE Stained with Coomassie Blue.
Storage Buffer	50 mM Tris-HCl, 10 mM reduced Glutathione, pH=8.0 in the elution buffer.
Storage Instruction	Store at -80°C. Aliquot to avoid repeated freezing and thawing.
Note	Best use within three months from the date of receipt of this protein.

Applications

- Enzyme-linked Immunoabsorbent Assay
- Western Blot (Recombinant protein)
- Antibody Production
- Protein Array

Gene Info — PRPF4B

Entrez GeneID [8899](#)

GeneBank Accession# [NM_003913](#)

Protein Accession# [NP_003904.2](#)

Gene Name PRPF4B

Gene Alias KIAA0536, PR4H, PRP4, PRP4H, PRP4K, dJ1013A10.1

Gene Description PRP4 pre-mRNA processing factor 4 homolog B (yeast)

Omim ID [602338](#)

Gene Ontology [Hyperlink](#)

Gene Summary Pre-mRNA splicing occurs in two sequential transesterification steps, and the protein encoded by this gene is thought to be involved in pre-mRNA splicing and in signal transduction. This protein belongs to a kinase family that includes serine/arginine-rich protein-specific kinases and cyclin-dependent kinases (CDKs). This protein is regarded as a CDK-like kinase (Clk) with homology to mitogen-activated protein kinases (MAPKs). [provided by RefSeq]

Other Designations OTTHUMP00000039176|dJ1013A10.1 (PRP4 protein kinase homolog)|protein-serine/threonine kinase|serine/threonine-protein kinase PRP4 homolog|serine/threonine-protein kinase PRP4K

Disease

- [Kidney Failure](#)