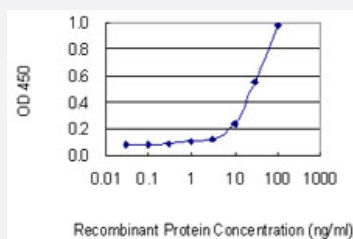


PRPF4B monoclonal antibody (M01), clone 3E10

Catalog # H00008899-M01

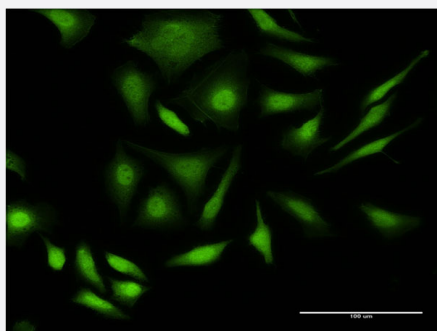
Size 100 ug

Applications



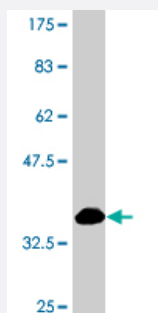
Sandwich ELISA (Recombinant protein)

Detection limit for recombinant GST tagged PRPF4B is 1 ng/ml as a capture antibody.



Immunofluorescence

Immunofluorescence of monoclonal antibody to PRPF4B on HeLa cell .
[antibody concentration 10 ug/ml]



Western Blot detection against Immunogen (37.62 KDa) .

Specification

Product Description

Mouse monoclonal antibody raised against a partial recombinant PRPF4B.

Immunogen	PRPF4B (NP_003904.2, 898 a.a. ~ 1005 a.a) partial recombinant protein with GST tag. MW of the GST tag alone is 26 KDa.
Sequence	LKLAMD LKGKMPNKMIRKGVFKDQHFQNLNFM YIEVDKVTREKVTVMSTINPTKDLLADLIGCQ RLPEDQRKKVHQLKDLLDQILMLDPAKRISINQALQHAFIQE
Host	Mouse
Reactivity	Human
Interspecies Antigen Sequence	Mouse (95); Rat (95)
Isotype	IgG2a Kappa
Quality Control Testing	Antibody Reactive Against Recombinant Protein. Western Blot detection against Immunogen (37.62 KDa) .
Storage Buffer	In 1x PBS, pH 7.4
Storage Instruction	Store at -20°C or lower. Aliquot to avoid repeated freezing and thawing.

Applications

- Western Blot (Recombinant protein)

[Protocol Download](#)

- Sandwich ELISA (Recombinant protein)

Detection limit for recombinant GST tagged PRPF4B is 1 ng/ml as a capture antibody.

[Protocol Download](#)

- ELISA

- Immunofluorescence

Immunofluorescence of monoclonal antibody to PRPF4B on HeLa cell . [antibody concentration 10 ug/ml]

Gene Info — PRPF4B

Entrez GeneID [8899](#)

GeneBank Accession# [NM_003913](#)

Protein Accession#	NP_003904.2
Gene Name	PRPF4B
Gene Alias	KIAA0536, PR4H, PRP4, PRP4H, PRP4K, dJ1013A10.1
Gene Description	PRP4 pre-mRNA processing factor 4 homolog B (yeast)
Omim ID	602338
Gene Ontology	Hyperlink
Gene Summary	Pre-mRNA splicing occurs in two sequential transesterification steps, and the protein encoded by this gene is thought to be involved in pre-mRNA splicing and in signal transduction. This protein belongs to a kinase family that includes serine/arginine-rich protein-specific kinases and cyclin-dependent kinases (CDKs). This protein is regarded as a CDK-like kinase (Clk) with homology to mitogen-activated protein kinases (MAPKs). [provided by RefSeq]
Other Designations	OTTHUMP00000039176 dJ1013A10.1 (PRP4 protein kinase homolog) protein-serine/threonine kinase serine/threonine-protein kinase PRP4 homolog serine/threonine-protein kinase PRP4K

Publication Reference

- [Loss of cyclin-dependent kinase-like 2 predicts poor prognosis in gastric cancer, and its overexpression suppresses cells growth and invasion.](#)

Fang CL, Uen YH, Chen HK, Hseu YC, Lin CC, Hung ST, Sun DP, Lin KY.

Cancer Medicine 2018 May; [Epub].

Application: IHC-P, WB-Ce, WB-Ti, WB-Tr, Human, Gastric tissues, Hs738.St/Int, AGS, TMC-1, HGC-27, 23132/87, AGS-CDKL2, HGC-27-CDKL2 cells

Disease

- [Kidney Failure](#)