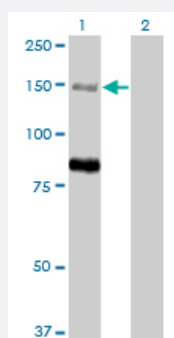


MTMR3 monoclonal antibody (M07), clone 1E11

Catalog # H00008897-M07

Size 100 ug

Applications

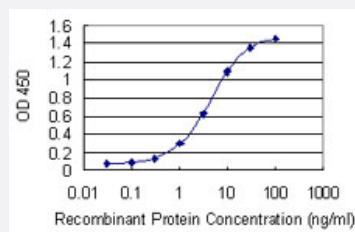


Western Blot (Transfected lysate)

Western Blot analysis of MTMR3 expression in transfected 293T cell line by MTMR3 monoclonal antibody (M07), clone 1E11.

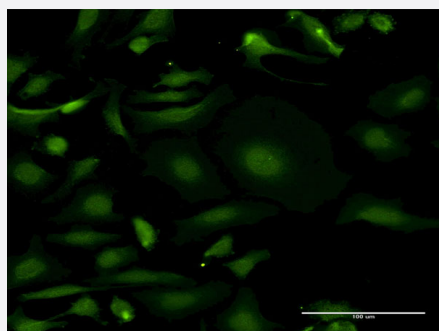
Lane 1: MTMR3 transfected lysate(133.6 KDa).

Lane 2: Non-transfected lysate.



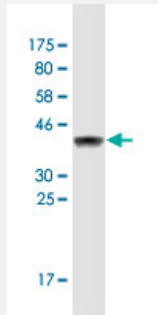
Sandwich ELISA (Recombinant protein)

Detection limit for recombinant GST tagged MTMR3 is 0.1 ng/ml as a capture antibody.



Immunofluorescence

Immunofluorescence of monoclonal antibody to MTMR3 on HeLa cell .
[antibody concentration 15 ug/ml]



Western Blot detection against Immunogen (36.3 KDa) .

Specification

Product Description	Mouse monoclonal antibody raised against a partial recombinant MTMR3.
Immunogen	MTMR3 (NP_066576.1, 579 a.a. ~ 674 a.a) partial recombinant protein with GST tag. MW of the GST tag alone is 26 KDa.
Sequence	CPSPTTPVDDSCAPYPAPGTSPDDPPLSRLPKTRSYDNLTTACDNTVPLASRRCS DPSLNKWK QEHRRSLELSSLAGPGEDPLSADSLGKPTRVPG
Host	Mouse
Reactivity	Human
Interspecies Antigen Sequence	Mouse (84); Rat (86)
Isotype	IgG2a Kappa
Quality Control Testing	Antibody Reactive Against Recombinant Protein. Western Blot detection against Immunogen (36.3 KDa) .
Storage Buffer	In 1x PBS, pH 7.4
Storage Instruction	Store at -20°C or lower. Aliquot to avoid repeated freezing and thawing.

Applications

● Western Blot (Transfected lysate)

Western Blot analysis of MTMR3 expression in transfected 293T cell line by MTMR3 monoclonal antibody (M07), clone 1E11.

Lane 1: MTMR3 transfected lysate(133.6 KDa).

Lane 2: Non-transfected lysate.

[Protocol Download](#)

- Western Blot (Recombinant protein)

[Protocol Download](#)

- Sandwich ELISA (Recombinant protein)

Detection limit for recombinant GST tagged MTMR3 is 0.1 ng/ml as a capture antibody.

[Protocol Download](#)

- ELISA

- Immunofluorescence

Immunofluorescence of monoclonal antibody to MTMR3 on HeLa cell . [antibody concentration 15 ug/ml]

Gene Info — MTMR3

Entrez GeneID [8897](#)

GeneBank Accession# [NM_021090](#)

Protein Accession# [NP_066576.1](#)

Gene Name MTMR3

Gene Alias FLJ32333, FYVE-DSP1, KIAA0371, ZFYVE10

Gene Description myotubularin related protein 3

Omim ID [603558](#)

Gene Ontology [Hyperlink](#)

Gene Summary

This gene encodes a member of the myotubularin dual specificity protein phosphatase gene family. The encoded protein is structurally similar to myotubularin but in addition contains a FYVE domain and an N-terminal PH-GRAM domain. The protein can self-associate and also form heteromers with another myotubularin related protein. The protein binds to phosphoinositide lipids through the PH-GRAM domain, and can hydrolyze phosphatidylinositol(3)-phosphate and phosphatidylinositol(3,5)-biphosphate in vitro. The encoded protein has been observed to have a perinuclear, possibly membrane-bound, distribution in cells, but it has also been found free in the cytoplasm. Multiple transcript variants encoding different isoforms have been found for this gene. [provided by RefSeq]

Other Designations

FYVE (Fab1 YGLO23 Vsp27 EEA1 domain) dual-specificity protein phosphatase|myotubularin-related protein 3|zinc finger, FYVE domain containing 10

Disease

- [Colorectal Neoplasms](#)
- [Microsatellite Instability](#)
- [Stomach Neoplasms](#)