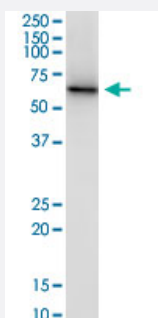


# CPNE3 monoclonal antibody (M02), clone 4F4

Catalog # H00008895-M02

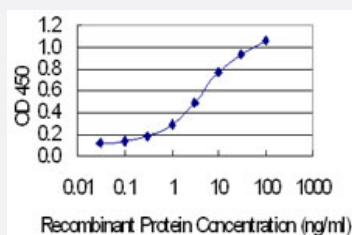
Size 100 ug

## Applications



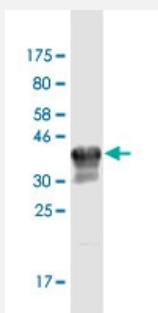
### Western Blot (Cell lysate)

CPNE3 monoclonal antibody (M02), clone 4F4. Western Blot analysis of CPNE3 expression in MCF-7.



### Sandwich ELISA (Recombinant protein)

Detection limit for recombinant GST tagged CPNE3 is 0.1 ng/ml as a capture antibody.



Western Blot detection against Immunogen (34.65 KDa) .

## Specification

### Product Description

Mouse monoclonal antibody raised against a partial recombinant CPNE3.

<b>Immunogen</b>	CPNE3 (NP_003900.1, 164 a.a. ~ 244 a.a) partial recombinant protein with GST tag. MW of the GST tag alone is 26 KDa.
<b>Sequence</b>	EFHKQTS DGNWLMVHRTEVVKNNLNPNVWRPFKISLNSLCYGDMDKTIKVECYDYDNDGSHDLIGT FQTTMTKLKEASRSSP
<b>Host</b>	Mouse
<b>Reactivity</b>	Human
<b>Interspecies Antigen Sequence</b>	Mouse (93); Rat (92)
<b>Isotype</b>	IgG2a Kappa
<b>Quality Control Testing</b>	Antibody Reactive Against Recombinant Protein. Western Blot detection against Immunogen (34.65 KDa) .
<b>Storage Buffer</b>	In 1x PBS, pH 7.4
<b>Storage Instruction</b>	Store at -20°C or lower. Aliquot to avoid repeated freezing and thawing.

## Applications

- Western Blot (Cell lysate)

CPNE3 monoclonal antibody (M02), clone 4F4. Western Blot analysis of CPNE3 expression in MCF-7.

[Protocol Download](#)

- Western Blot (Recombinant protein)

[Protocol Download](#)

- Sandwich ELISA (Recombinant protein)

Detection limit for recombinant GST tagged CPNE3 is 0.1 ng/ml as a capture antibody.

[Protocol Download](#)

- ELISA

## Gene Info — CPNE3

Entrez GeneID [8895](#)

GeneBank Accession#	<a href="#">NM_003909</a>
Protein Accession#	<a href="#">NP_003900.1</a>
Gene Name	CPNE3
Gene Alias	CPN3, KIAA0636, PRO1071
Gene Description	copine III
Omim ID	<a href="#">604207</a>
Gene Ontology	<a href="#">Hyperlink</a>
Gene Summary	Calcium-dependent membrane-binding proteins may regulate molecular events at the interface of the cell membrane and cytoplasm. This gene encodes a protein which contains two type II C2 domains in the amino-terminus and an A domain-like sequence in the carboxy-terminus. The A domain mediates interactions between integrins and extracellular ligands. [provided by RefSeq]
Other Designations	-

## Disease

- [Genetic Predisposition to Disease](#)
- [Prostate cancer](#)
- [Prostatic Neoplasms](#)