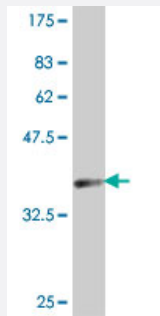


# DDX18 polyclonal antibody (A01)

Catalog # H00008886-A01

Size 50 uL

## Applications



Western Blot detection against Immunogen (37.11 kDa) .

## Specification

<b>Product Description</b>	Mouse polyclonal antibody raised against a partial recombinant DDX18.
<b>Immunogen</b>	DDX18 (NP_006764, 571 a.a. ~ 670 a.a) partial recombinant protein with GST tag.
<b>Sequence</b>	KNYFLHKSAQEAYKSYIRAYDSHSLKQIFNVNNLNLPQVALSFGFKVPPFVDLNVNSNEGKQKKR GGGGGFGYQKTKKVEKSKIFKHISKSSDSRQFSH
<b>Host</b>	Mouse
<b>Reactivity</b>	Human
<b>Interspecies Antigen Sequence</b>	Mouse (86); Rat (84)
<b>Quality Control Testing</b>	Antibody Reactive Against Recombinant Protein. Western Blot detection against Immunogen (37.11 kDa) .
<b>Storage Buffer</b>	50 % glycerol
<b>Storage Instruction</b>	Store at -20°C or lower. Aliquot to avoid repeated freezing and thawing.

## Applications

- Western Blot (Recombinant protein)

[Protocol Download](#)

- ELISA

## Gene Info — DDX18

Entrez GeneID [8886](#)

GeneBank Accession# [NM\\_006773](#)

Protein Accession# [NP\\_006764](#)

Gene Name DDX18

Gene Alias FLJ33908, MrDb

Gene Description DEAD (Asp-Glu-Ala-Asp) box polypeptide 18

Omim ID [606355](#)

Gene Ontology [Hyperlink](#)

**Gene Summary** DEAD box proteins, characterized by the conserved motif Asp-Glu-Ala-Asp (DEAD), are putative RNA helicases. They are implicated in a number of cellular processes involving alteration of RNA secondary structure such as translation initiation, nuclear and mitochondrial splicing, and ribosome and spliceosome assembly. Based on their distribution patterns, some members of this family are believed to be involved in embryogenesis, spermatogenesis, and cellular growth and division. This gene encodes a DEAD box protein, and it is activated by Myc protein. [provided by RefSeq]

**Other Designations** DEAD/H (Asp-Glu-Ala-Asp/His) box polypeptide 18 (Myc-regulated)|Myc-regulated DEAD box protein

## Disease

- [Genetic Predisposition to Disease](#)
- [Kidney Failure](#)
- [Lung Neoplasms](#)