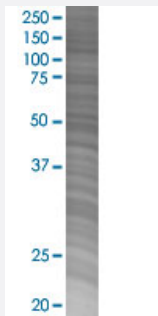


# VNN1 293T Cell Transient Overexpression Lysate(Denatured)

Catalog # H00008876-T02

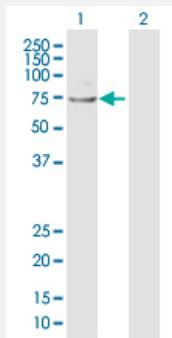
Size 100 uL

## Applications



### SDS-PAGE Gel

VNN1 transfected lysate.



### Western Blot

Lane 1: VNN1 transfected lysate ( 57.00 KDa)

Lane 2: Non-transfected lysate.

## Specification

Transfected Cell Line	293T
Plasmid	pCMV-VNN1 full-length
Host	Human
Theoretical MW (kDa)	57
Interspecies Antigen Sequence	Mouse (75); Rat (78)

## Quality Control Testing

Transient overexpression cell lysate was tested with Anti-VNN1 antibody ([H00008876-D01P](#)) by Western Blots.  
SDS-PAGE Gel  
VNN1 transfected lysate.  
Western Blot  
Lane 1: VNN1 transfected lysate ( 57.00 KDa)  
Lane 2: Non-transfected lysate.

## Storage Buffer

1X Sample Buffer (50 mM Tris-HCl, 2% SDS, 10% glycerol, 300 mM 2-mercaptoethanol, 0.01% Bromophenol blue)

## Storage Instruction

Store at -80°C. Aliquot to avoid repeated freezing and thawing.

## Applications

- Western Blot

## Gene Info — VNN1

## Entrez GeneID

[8876](#)

## GeneBank Accession#

[NM\\_004666.1](#)

## Protein Accession#

[NP\\_004657.1](#)

## Gene Name

VNN1

## Gene Alias

HDLCQ8, MGC116930, MGC116931, MGC116932, MGC116933, Tiff66

## Gene Description

vanin 1

## Omim ID

[603570](#)

## Gene Ontology

[Hyperlink](#)

## Gene Summary

This gene encodes a member of the vanin family of proteins, which share extensive sequence similarity with each other, and also with biotinidase. The family includes secreted and membrane-associated proteins, a few of which have been reported to participate in hematopoietic cell trafficking. No biotinidase activity has been demonstrated for any of the vanin proteins, however, they possess pantetheinase activity, which may play a role in oxidative-stress response. This protein, like its mouse homolog, is likely a GPI-anchored cell surface molecule. The mouse protein is expressed by the perivascular thymic stromal cells and regulates migration of T-cell progenitors to the thymus. This gene lies in close proximity to, and in the same transcriptional orientation as, two other vanin genes on chromosome 6q23-q24. [provided by RefSeq]

## Other Designations

OTTHUMP00000017227|Vannin 1|pantetheinase

## Pathway

- [Pantothenate and CoA biosynthesis](#)

## Disease

- [Hypertension](#)