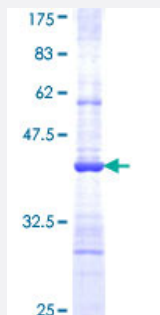


VNN1 (Human) Recombinant Protein (Q01)

Catalog # H00008876-Q01

Size 25 ug, 10 ug

Applications



Specification

Product Description	Human VNN1 partial ORF (NP_004657, 298 a.a. - 397 a.a.) recombinant protein with GST-tag at N-terminal.
Sequence	KLLLSQLDSHPSHSAVVNWTSYASSIEALSSGNKEFKGTVFFDEFTFVKLTGVAGNYTVCQKDLC CHLSYKMSENIPNEVYALGAFDGLHTVEGRYYLQI
Host	Wheat Germ (in vitro)
Theoretical MW (kDa)	36.74
Interspecies Antigen Sequence	Mouse (75); Rat (78)
Preparation Method	in vitro wheat germ expression system
Purification	Glutathione Sepharose 4 Fast Flow
Quality Control Testing	12.5% SDS-PAGE Stained with Coomassie Blue.
Storage Buffer	50 mM Tris-HCl, 10 mM reduced Glutathione, pH=8.0 in the elution buffer.
Storage Instruction	Store at -80°C. Aliquot to avoid repeated freezing and thawing.
Note	Best use within three months from the date of receipt of this protein.

Applications

- Enzyme-linked Immunoabsorbent Assay
- Western Blot (Recombinant protein)
- Antibody Production
- Protein Array

Gene Info — VNN1

Entrez GeneID	8876
GeneBank Accession#	NM_004666
Protein Accession#	NP_004657
Gene Name	VNN1
Gene Alias	HDLCQ8, MGC116930, MGC116931, MGC116932, MGC116933, Tiff66
Gene Description	vanin 1
Omim ID	603570
Gene Ontology	Hyperlink
Gene Summary	<p>This gene encodes a member of the vanin family of proteins, which share extensive sequence similarity with each other, and also with biotinidase. The family includes secreted and membrane-associated proteins, a few of which have been reported to participate in hematopoietic cell trafficking. No biotinidase activity has been demonstrated for any of the vanin proteins, however, they possess pantetheinase activity, which may play a role in oxidative-stress response. This protein, like its mouse homolog, is likely a GPI-anchored cell surface molecule. The mouse protein is expressed by the perivascular thymic stromal cells and regulates migration of T-cell progenitors to the thymus. This gene lies in close proximity to, and in the same transcriptional orientation as, two other vanin genes on chromosome 6q23-q24. [provided by RefSeq]</p>
Other Designations	OTTHUMP00000017227 Vannin 1 pantetheinase

Pathway

- [Pantothenate and CoA biosynthesis](#)

Disease

- [Hypertension](#)