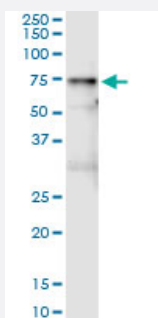


VNN1 (Human) IP-WB Antibody Pair

Catalog # H00008876-PW2

Size 1 Set

Applications



Immunoprecipitation of VNN1 transfected lysate using mouse monoclonal anti-VNN1 and Protein A Magnetic Bead ([U0007](#)), and immunoblotted with rabbit polyclonal anti-VNN1.

Specification

Product Description	This IP-WB antibody pair set comes with one antibody for immunoprecipitation and another to detect the precipitated protein in western blot.
Reactivity	Human
Interspecies Antigen Sequence	Mouse (75); Rat (78)
Quality Control Testing	Immunoprecipitation-Western Blot (IP-WB) Immunoprecipitation of VNN1 transfected lysate using mouse monoclonal anti-VNN1 and Protein A Magnetic Bead (U0007), and immunoblotted with rabbit polyclonal anti-VNN1.
Supplied Product	Antibody pair set content: 1. Antibody pair for IP: mouse monoclonal anti-VNN1 (300 ug) 2. Antibody pair for WB: rabbit polyclonal anti-VNN1 (50 ul)
Storage Instruction	Store reagents of the antibody pair set at -20°C or lower. Please aliquot to avoid repeated freeze thaw cycle. Reagents should be returned to -20°C storage immediately after use.

Applications

- Immunoprecipitation-Western Blot

[Protocol Download](#)

Gene Info — VNN1

Entrez GeneID [8876](#)

Gene Name VNN1

Gene Alias HDLCQ8, MGC116930, MGC116931, MGC116932, MGC116933, Tiff66

Gene Description vanin 1

Omim ID [603570](#)

Gene Ontology [Hyperlink](#)

Gene Summary This gene encodes a member of the vanin family of proteins, which share extensive sequence similarity with each other, and also with biotinidase. The family includes secreted and membrane-associated proteins, a few of which have been reported to participate in hematopoietic cell trafficking. No biotinidase activity has been demonstrated for any of the vanin proteins, however, they possess pantetheinase activity, which may play a role in oxidative-stress response. This protein, like its mouse homolog, is likely a GPI-anchored cell surface molecule. The mouse protein is expressed by the perivascular thymic stromal cells and regulates migration of T-cell progenitors to the thymus. This gene lies in close proximity to, and in the same transcriptional orientation as, two other vanin genes on chromosome 6q23-q24. [provided by RefSeq]

Other Designations OTTHUMP00000017227|Vannin 1|pantetheinase

Pathway

- [Pantothenate and CoA biosynthesis](#)

Disease

- [Hypertension](#)