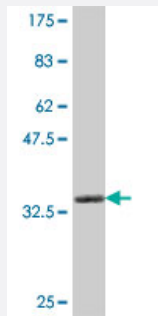


# ARHGEF7 polyclonal antibody (A01)

Catalog # H00008874-A01

Size 50 uL

## Applications



Western Blot detection against Immunogen (35.9 KDa) .

## Specification

<b>Product Description</b>	Mouse polyclonal antibody raised against a partial recombinant ARHGEF7.
<b>Immunogen</b>	ARHGEF7 (NP_663788, 102 a.a. ~ 190 a.a) partial recombinant protein with GST tag.
<b>Sequence</b>	SSLVTLNKVTADIGLGSDSVCARPSSHRIKSFDLSGSQSLHTRTSKLFQGGQYRSLDMTDNSNNQL VVRAKFNFQQTNEDELSFSKGDVI
<b>Host</b>	Mouse
<b>Reactivity</b>	Human
<b>Interspecies Antigen Sequence</b>	Mouse (93); Rat (84)
<b>Quality Control Testing</b>	Antibody Reactive Against Recombinant Protein. Western Blot detection against Immunogen (35.9 KDa) .
<b>Storage Buffer</b>	50 % glycerol
<b>Storage Instruction</b>	Store at -20°C or lower. Aliquot to avoid repeated freezing and thawing.

## Applications

- Western Blot (Recombinant protein)

[Protocol Download](#)

- ELISA

## Gene Info — ARHGEF7

Entrez GeneID [8874](#)

GeneBank Accession# [NM\\_145735](#)

Protein Accession# [NP\\_663788](#)

Gene Name ARHGEF7

Gene Alias BETA-PIX, COOL1, DKFZp686C12170, DKFZp761K1021, KIAA0142, KIAA0412, Nbla10314, P50, P50BP, P85, P85COOL1, P85SPR, PAK3, PIXB

Gene Description Rho guanine nucleotide exchange factor (GEF) 7

Omim ID [605477](#)

Gene Ontology [Hyperlink](#)

**Gene Summary** Rho GTPases play a fundamental role in numerous cellular processes triggered by extracellular stimuli that work through G protein coupled receptors. The encoded protein belongs to a family of cytoplasmic proteins that activate the Ras-like family of Rho proteins by exchanging bound GDP for GTP. It forms a complex with the small GTP binding protein Rac1 and recruits Rac1 to membrane ruffles and to focal adhesions. This protein can induce membrane ruffling. Multiple alternatively spliced transcript variants encoding different isoforms have been described for this gene. [provided by RefSeq]

**Other Designations** OTTHUMP00000178804|PAK-interacting exchange factor beta|SH3 domain-containing proline-rich protein|guanine nucleotide exchange factor 7|rho guanine nucleotide exchange factor 7

## Pathway

- [Regulation of actin cytoskeleton](#)