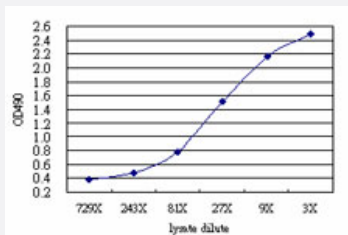


# SYNJ2 (Human) Matched Antibody Pair

Catalog # H00008871-AP51

Size 1 Set

## Applications



Sandwich ELISA detection sensitivity ranging from approximately 243x to 3x dilution of the SYNJ2 293T overexpression lysate (non-denatured).

## Specification

<b>Product Description</b>	This antibody pair set comes with a matched antibody pair to detect and quantify the protein level of human SYNJ2.
<b>Reactivity</b>	Human
<b>Interspecies Antigen Sequence</b>	Mouse (78); Rat (79)
<b>Quality Control Testing</b>	Standard curve using SYNJ2 293T overexpression lysate (non-denatured) as an analyte. Sandwich ELISA detection sensitivity ranging from approximately 243x to 3x dilution of the SYNJ2 293T overexpression lysate (non-denatured).
<b>Supplied Product</b>	Antibody pair set content: 1. Capture antibody: mouse monoclonal anti-SYNJ2 (100 ug) 2. Detection antibody: rabbit purified polyclonal anti-SYNJ2 (50 ug) *Reagents are sufficient for at least 3-5 x 96 well plates using recommended protocols.
<b>Storage Instruction</b>	Store reagents of the antibody pair set at -20°C or lower. Please aliquot to avoid repeated freeze thaw cycle. Reagents should be returned to -20°C storage immediately after use.

## Applications

- ELISA Pair (Transfected lysate)

[Protocol Download](#)

## Gene Info — SYNJ2

Entrez GeneID	<a href="#">8871</a>
Gene Name	SYNJ2
Gene Alias	INPP5H, KIAA0348, MGC44422
Gene Description	synaptojanin 2
Omim ID	<a href="#">609410</a>
Gene Ontology	<a href="#">Hyperlink</a>
Gene Summary	Synaptojanin-2 is a ubiquitously expressed inositol polyphosphate 5-phosphatase (Malecz et al., 2000 [PubMed 11084340]).[supplied by OMIM]
Other Designations	OTTHUMP00000017494 inositol phosphate 5'-phosphatase 2 (synaptojanin 2)

## Pathway

- [Inositol phosphate metabolism](#)
- [Metabolic pathways](#)
- [Phosphatidylinositol signaling system](#)