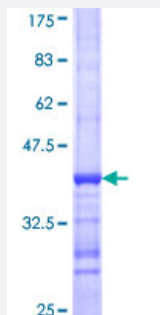


# PCAF (Human) Recombinant Protein (Q02)

Catalog # H00008850-Q02

Size 25 ug, 10 ug

## Applications



## Specification

<b>Product Description</b>	Human PCAF partial ORF ( NP_003875, 731 a.a. - 832 a.a.) recombinant protein with GST-tag at N-terminal.
<b>Sequence</b>	TLKSILQQVKSHQSAWPFMEPVKRTEAPGYEYVIRFPMDLKTMSERLKNRYVSKKLFMADLQRV FTNCKEYNPPESEYYKCANILEKFFFSKIKEAGLIDK
<b>Host</b>	Wheat Germ (in vitro)
<b>Theoretical MW (kDa)</b>	36.96
<b>Preparation Method</b>	<a href="#">in vitro wheat germ expression system</a>
<b>Purification</b>	Glutathione Sepharose 4 Fast Flow
<b>Quality Control Testing</b>	12.5% SDS-PAGE Stained with Coomassie Blue.
<b>Storage Buffer</b>	50 mM Tris-HCl, 10 mM reduced Glutathione, pH=8.0 in the elution buffer.
<b>Storage Instruction</b>	Store at -80°C. Aliquot to avoid repeated freezing and thawing.
<b>Note</b>	Best use within three months from the date of receipt of this protein.

## Applications

- Enzyme-linked Immunoabsorbent Assay
- Western Blot (Recombinant protein)
- Antibody Production
- Protein Array

## Gene Info — KAT2B

Entrez GeneID	<a href="#">8850</a>
GeneBank Accession#	<a href="#">NM_003884</a>
Protein Accession#	<a href="#">NP_003875</a>
Gene Name	KAT2B
Gene Alias	CAF, P, P/CAF, PCAF
Gene Description	K(lysine) acetyltransferase 2B
Omim ID	<a href="#">602303</a>
Gene Ontology	<a href="#">Hyperlink</a>
Gene Summary	CBP and p300 are large nuclear proteins that bind to many sequence-specific factors involved in cell growth and/or differentiation, including c-jun and the adenoviral oncoprotein E1A. The protein encoded by this gene associates with p300/CBP. It has in vitro and in vivo binding activity with C BP and p300, and competes with E1A for binding sites in p300/CBP. It has histone acetyl transferase activity with core histones and nucleosome core particles, indicating that this protein plays a direct role in transcriptional regulation. [provided by RefSeq]
Other Designations	CREBBP-associated factor p300/CBP-associated factor

## Pathway

- [Notch signaling pathway](#)

## Disease

- [Asthma](#)
- [Breast Neoplasms](#)
- [Genetic Predisposition to Disease](#)
- [Ovarian Neoplasms](#)
- [Tobacco Use Disorder](#)