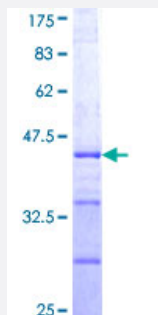


PCAF (Human) Recombinant Protein (Q01)

Catalog # H00008850-Q01

Size 25 ug, 10 ug

Applications



Specification

Product Description	Human PCAF partial ORF (AAH60823, 353 a.a. - 452 a.a.) recombinant protein with GST-tag at N-terminal.
Sequence	LEEEVYSQNSPWDQDFLSASSRTSQLGIQTVINPPPVAGTISYNSTSSSLEQPNAGSSSPACKASSGLEANPGEKRKMTDSHVLEEAKKPRVMGDIPME
Host	Wheat Germ (in vitro)
Theoretical MW (kDa)	36.63
Preparation Method	in vitro wheat germ expression system
Purification	Glutathione Sepharose 4 Fast Flow
Quality Control Testing	12.5% SDS-PAGE Stained with Coomassie Blue.
Storage Buffer	50 mM Tris-HCl, 10 mM reduced Glutathione, pH=8.0 in the elution buffer.
Storage Instruction	Store at -80°C. Aliquot to avoid repeated freezing and thawing.
Note	Best use within three months from the date of receipt of this protein.

Applications

- Enzyme-linked Immunoabsorbent Assay
- Western Blot (Recombinant protein)
- Antibody Production
- Protein Array

Gene Info — KAT2B

Entrez GeneID	8850
GeneBank Accession#	BC060823
Protein Accession#	AAH60823
Gene Name	KAT2B
Gene Alias	CAF, P, P/CAF, PCAF
Gene Description	K(lysine) acetyltransferase 2B
Omim ID	602303
Gene Ontology	Hyperlink
Gene Summary	CBP and p300 are large nuclear proteins that bind to many sequence-specific factors involved in cell growth and/or differentiation, including c-jun and the adenoviral oncoprotein E1A. The protein encoded by this gene associates with p300/CBP. It has in vitro and in vivo binding activity with C BP and p300, and competes with E1A for binding sites in p300/CBP. It has histone acetyl transferase activity with core histones and nucleosome core particles, indicating that this protein plays a direct role in transcriptional regulation. [provided by RefSeq]
Other Designations	CREBBP-associated factor p300/CBP-associated factor

Pathway

- [Notch signaling pathway](#)

Disease

- [Asthma](#)
- [Breast Neoplasms](#)
- [Genetic Predisposition to Disease](#)
- [Ovarian Neoplasms](#)
- [Tobacco Use Disorder](#)