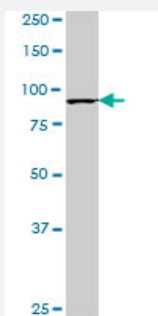


PCAF monoclonal antibody (M13), clone 1E3

Catalog # H00008850-M13

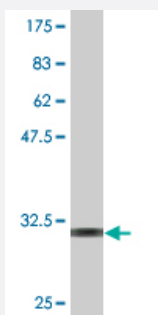
Size 100 ug

Applications



Western Blot (Cell lysate)

PCAF monoclonal antibody (M13), clone 1E3. Western Blot analysis of PCAF expression in MES-SA/Dx5 (Cat # L021V1).



Western Blot detection against Immunogen (32.01 KDa) .

Specification

Product Description	Mouse monoclonal antibody raised against a full-length recombinant PCAF.
Immunogen	PCAF (NP_003875, 367 a.a. ~ 432 a.a) full-length recombinant protein with GST tag. MW of the GST tag alone is 26 KDa.
Sequence	QDFLSASSRTSQLGIQTVINPPPVAGTISYNSTSSSLEQPNAGSSSPACKASSGLE
Host	Mouse
Reactivity	Human
Isotype	IgG2b Kappa

Quality Control Testing

Antibody Reactive Against Recombinant Protein.
Western Blot detection against Immunogen (32.01 KDa) .

Storage Buffer

In 1x PBS, pH 7.4

Storage Instruction

Store at -20°C or lower. Aliquot to avoid repeated freezing and thawing.

Applications

- Western Blot (Cell lysate)

PCAF monoclonal antibody (M13), clone 1E3. Western Blot analysis of PCAF expression in MES-SA/Dx5 (Cat # L021V1).

[Protocol Download](#)

- Western Blot (Recombinant protein)

[Protocol Download](#)

- ELISA

Gene Info — KAT2B

Entrez GeneID

[8850](#)

GeneBank Accession#

[NM_003884](#)

Protein Accession#

[NP_003875](#)

Gene Name

KAT2B

Gene Alias

CAF, P, P/CAF, PCAF

Gene Description

K(lysine) acetyltransferase 2B

Omim ID

[602303](#)

Gene Ontology

[Hyperlink](#)

Gene Summary

CBP and p300 are large nuclear proteins that bind to many sequence-specific factors involved in cell growth and/or differentiation, including c-jun and the adenoviral oncoprotein E1A. The protein encoded by this gene associates with p300/CBP. It has in vitro and in vivo binding activity with C BP and p300, and competes with E1A for binding sites in p300/CBP. It has histone acetyl transferase activity with core histones and nucleosome core particles, indicating that this protein plays a direct role in transcriptional regulation. [provided by RefSeq]

Other Designations

CREBBP-associated factor/p300/CBP-associated factor

Pathway

- [Notch signaling pathway](#)

Disease

- [Asthma](#)
- [Breast Neoplasms](#)
- [Genetic Predisposition to Disease](#)
- [Ovarian Neoplasms](#)
- [Tobacco Use Disorder](#)