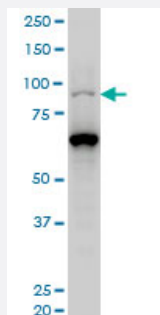


# PCAF monoclonal antibody (M03), clone 5E10

Catalog # H00008850-M03

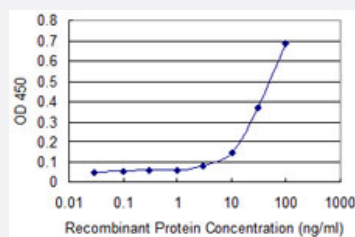
Size 100 ug

## Applications



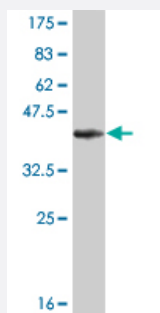
### Western Blot (Cell lysate)

PCAF monoclonal antibody (M03), clone 5E10 Western Blot analysis of PCAF expression in HeLa S3 NE ( Cat # L013V3 ).



### Sandwich ELISA (Recombinant protein)

Detection limit for recombinant GST tagged PCAF is approximately 10ng/ml as a capture antibody.



Western Blot detection against Immunogen (36.63 KDa) .

## Specification

### Product Description

Mouse monoclonal antibody raised against a partial recombinant PCAF.

Immunogen	PCAF (AAH60823, 353 a.a. ~ 452 a.a) partial recombinant protein with GST tag. MW of the GST tag alone is 26 KDa.
Sequence	LEEEVYSQNSPWDQDFLSASSRTSQLGIQTVINPPPVAGTISYNSTSSSLEQPNAGSSSPACKASSGLEANPGEKRKMTDSHVLEEAKKPRVMGDIPME
Host	Mouse
Reactivity	Human
Isotype	IgG2a Kappa
Quality Control Testing	Antibody Reactive Against Recombinant Protein. Western Blot detection against Immunogen (36.63 KDa) .
Storage Buffer	In 1x PBS, pH 7.4
Storage Instruction	Store at -20°C or lower. Aliquot to avoid repeated freezing and thawing.

## Applications

- Western Blot (Cell lysate)

PCAF monoclonal antibody (M03), clone 5E10 Western Blot analysis of PCAF expression in Hela S3 NE ( Cat # L013V3 ).

[Protocol Download](#)

- Western Blot (Recombinant protein)

[Protocol Download](#)

- Sandwich ELISA (Recombinant protein)

Detection limit for recombinant GST tagged PCAF is approximately 10ng/ml as a capture antibody.

[Protocol Download](#)

- ELISA

## Gene Info — KAT2B

Entrez GeneID	<a href="#">8850</a>
GeneBank Accession#	<a href="#">BC060823</a>
Protein Accession#	<a href="#">AAH60823</a>

Gene Name	KAT2B
Gene Alias	CAF, P, P/CAF, PCAF
Gene Description	K(lysine) acetyltransferase 2B
Omim ID	<a href="#">602303</a>
Gene Ontology	<a href="#">Hyperlink</a>
Gene Summary	CBP and p300 are large nuclear proteins that bind to many sequence-specific factors involved in cell growth and/or differentiation, including c-jun and the adenoviral oncoprotein E1A. The protein encoded by this gene associates with p300/CBP. It has in vitro and in vivo binding activity with C BP and p300, and competes with E1A for binding sites in p300/CBP. It has histone acetyl transferase activity with core histones and nucleosome core particles, indicating that this protein plays a direct role in transcriptional regulation. [provided by RefSeq]
Other Designations	CREBBP-associated factor p300/CBP-associated factor

## Pathway

- [Notch signaling pathway](#)

## Disease

- [Asthma](#)
- [Breast Neoplasms](#)
- [Genetic Predisposition to Disease](#)
- [Ovarian Neoplasms](#)
- [Tobacco Use Disorder](#)