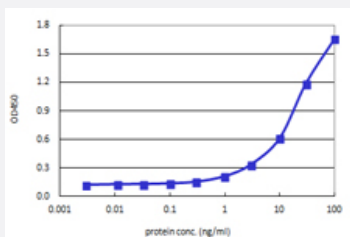


KAT2B (Human) Matched Antibody Pair

Catalog # H00008850-AP41

Size 1 Set

Applications



Sandwich ELISA detection sensitivity ranging from 1 ng/ml to 100 ng/ml.

Specification

Product Description

This antibody pair set comes with a matched antibody pair to detect and quantify the protein level of human KAT2B.

Reactivity

Human

Quality Control Testing

Standard curve using recombinant protein (H00008850-Q01) as an analyte.
Sandwich ELISA detection sensitivity ranging from 1 ng/ml to 100 ng/ml.

Supplied Product

Antibody pair set content:

1. Capture antibody: mouse monoclonal anti-KAT2B, IgG2b Kappa (100 ug)
2. Detection antibody: biotinylated mouse monoclonal anti-KAT2B, IgG2a Kappa (50 ug)

*Reagents are sufficient for at least 3-5 x 96 well plates using recommended protocols.

Storage Instruction

Store reagents of the antibody pair set at -20°C or lower. Please aliquot to avoid repeated freeze thaw cycle. Reagents should be returned to -20°C storage immediately after use.

Applications

- ELISA Pair (Recombinant protein)

[Protocol Download](#)

Gene Info — KAT2B

Entrez GeneID [8850](#)

Gene Name KAT2B

Gene Alias CAF, P, P/CAF, PCAF

Gene Description K(lysine) acetyltransferase 2B

Omim ID [602303](#)

Gene Ontology [Hyperlink](#)

Gene Summary CBP and p300 are large nuclear proteins that bind to many sequence-specific factors involved in cell growth and/or differentiation, including c-jun and the adenoviral oncoprotein E1A. The protein encoded by this gene associates with p300/CBP. It has in vitro and in vivo binding activity with C BP and p300, and competes with E1A for binding sites in p300/CBP. It has histone acetyl transferase activity with core histones and nucleosome core particles, indicating that this protein plays a direct role in transcriptional regulation. [provided by RefSeq]

Other Designations CREBBP-associated factor|p300/CBP-associated factor

Pathway

- [Notch signaling pathway](#)

Disease

- [Asthma](#)
- [Breast Neoplasms](#)
- [Genetic Predisposition to Disease](#)
- [Ovarian Neoplasms](#)
- [Tobacco Use Disorder](#)