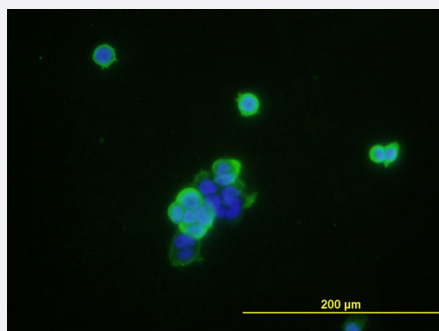


PROM1 monoclonal antibody (M11), clone 5B9

Catalog # H00008842-M11

Size 100 ug

Applications



Immunofluorescence

Immunofluorescence of monoclonal antibody to PROM1 on MCF-7 cell .
[antibody concentration 10 ug/ml]

Specification

Product Description Mouse monoclonal antibody raised against a partial recombinant PROM1.

Immunogen PROM1 (NP_006008.1, 747 a.a. ~ 760 a.a) partial recombinant protein.

Sequence IGYFEHYLQWIEFSC

Host Mouse

Reactivity Human

Isotype IgG1 Kappa

Quality Control Testing Antibody Reactive Against Recombinant Protein.

Storage Buffer In 1x PBS, pH 7.4

Storage Instruction Store at -20°C or lower. Aliquot to avoid repeated freezing and thawing.

Applications

- ELISA

- Immunofluorescence

Immunofluorescence of monoclonal antibody to PROM1 on MCF-7 cell . [antibody concentration 10 ug/ml]

Gene Info — PROM1

Entrez GeneID [8842](#)

GeneBank Accession# [NM_006017.2](#)

Protein Accession# [NP_006008.1](#)

Gene Name PROM1

Gene Alias AC133, CD133, MSTP061, PROML1, RP41

Gene Description prominin 1

Omim ID [604365](#)

Gene Ontology [Hyperlink](#)

Gene Summary This gene encodes a pentaspan transmembrane glycoprotein. The protein localizes to membrane protrusions and is often expressed on adult stem cells, where it is thought to function in maintaining stem cell properties by suppressing differentiation. Mutations in this gene have been shown to result in retinitis pigmentosa and Stargardt disease. Expression of this gene is also associated with several types of cancer. This gene is expressed from at least five alternative promoters that are expressed in a tissue-dependent manner. Multiple transcript variants encoding different isoforms have been found for this gene. [provided by RefSeq]

Other Designations hProminin|hematopoietic stem cell antigen|prominin-like 1

Disease

- [Carcinoma](#)
- [Genetic Predisposition to Disease](#)
- [Head and Neck Neoplasms](#)
- [Neoplasms](#)
- [Recurrence](#)
- [Tobacco Use Disorder](#)