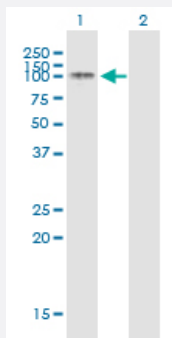


# PROM1 monoclonal antibody (M10), clone 3D4

Catalog # H00008842-M10

Size 100 ug

## Applications

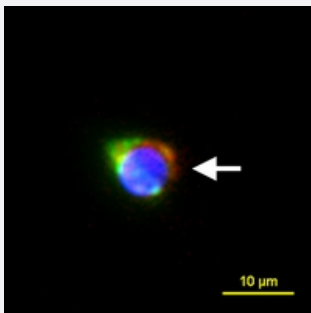


### Western Blot (Transfected lysate)

Western Blot analysis of PROM1 expression in transfected 293T cell line by PROM1 monoclonal antibody (M10), clone 3D4.

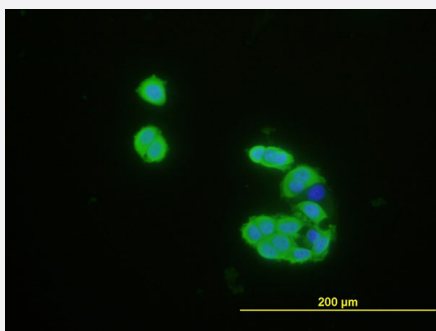
Lane 1: PROM1 transfected lysate (Predicted MW: 96.3 KDa).

Lane 2: Non-transfected lysate.



### Immunofluorescence (Circulating Cancer Stem Cell)

Representative images of circulating lung cancer cells (white arrow) from patient with lung cancer. Circulating lung cancer cells were detected by using immunofluorescence staining for CSV (FITC, green), CD45 (PE, orange), CD133 (APC, red) and Nucleus (Hoechst 33342, blue).



### Immunofluorescence

Immunofluorescence of monoclonal antibody to PROM1 on MCF-7 cell .  
[antibody concentration 10 ug/ml]

## Specification

### Product Description

Mouse monoclonal antibody raised against a partial recombinant PROM1.

### Immunogen

PROM1 (NP\_006008.1, 747 a.a. ~ 760 a.a) partial recombinant protein.

Sequence	IGYFEHYLQWIEFSC
Host	Mouse
Reactivity	Human
Isotype	IgG1 Kappa
Quality Control Testing	Antibody Reactive Against Recombinant Protein.
Storage Buffer	In 1x PBS, pH 7.4
Storage Instruction	Store at -20°C or lower. Aliquot to avoid repeated freezing and thawing.

## Applications

- Western Blot (Transfected lysate)

Western Blot analysis of PROM1 expression in transfected 293T cell line by PROM1 monoclonal antibody (M10), clone 3D4.

Lane 1: PROM1 transfected lysate (Predicted MW: 96.3 KDa).

Lane 2: Non-transfected lysate.

[Protocol Download](#)

- ELISA

- Immunofluorescence (Circulating Cancer Stem Cell)

Representative images of circulating lung cancer cells (white arrow) from patient with lung cancer. Circulating lung cancer cells were detected by using immunofluorescence staining for CSV (FITC, green), CD45 (PE, orange), CD133 (APC, red) and Nucleus (Hoechst 33342, blue).

- Immunofluorescence

Immunofluorescence of monoclonal antibody to PROM1 on MCF-7 cell . [antibody concentration 10 ug/ml]

## Gene Info — PROM1

Entrez GeneID	<a href="#">8842</a>
GeneBank Accession#	<a href="#">NM_006017.2</a>
Protein Accession#	<a href="#">NP_006008.1</a>
Gene Name	PROM1

Gene Alias	AC133, CD133, MSTP061, PROML1, RP41
Gene Description	prominin 1
Omim ID	<a href="#">604365</a>
Gene Ontology	<a href="#">Hyperlink</a>
Gene Summary	<p>This gene encodes a pentaspan transmembrane glycoprotein. The protein localizes to membrane protrusions and is often expressed on adult stem cells, where it is thought to function in maintaining stem cell properties by suppressing differentiation. Mutations in this gene have been shown to result in retinitis pigmentosa and Stargardt disease. Expression of this gene is also associated with several types of cancer. This gene is expressed from at least five alternative promoters that are expressed in a tissue-dependent manner. Multiple transcript variants encoding different isoforms have been found for this gene. [provided by RefSeq]</p>
Other Designations	hProminin hematopoietic stem cell antigen prominin-like 1

## Disease

- [Carcinoma](#)
- [Genetic Predisposition to Disease](#)
- [Head and Neck Neoplasms](#)
- [Neoplasms](#)
- [Recurrence](#)
- [Tobacco Use Disorder](#)