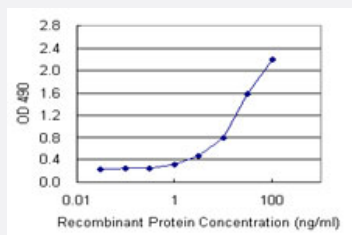


HDAC3 (Human) Matched Antibody Pair

Catalog # H00008841-AP45

Size 1 Set

Applications



Sandwich ELISA detection sensitivity ranging from 1 ng/ml to 100 ng/ml.

Specification

Product Description	This antibody pair set comes with a matched antibody pair to detect and quantify the protein level of human HDAC3.
Reactivity	Human
Interspecies Antigen Sequence	Mouse (99); Rat (99)
Quality Control Testing	Standard curve using recombinant protein (H00008841-P01) as an analyte. Sandwich ELISA detection sensitivity ranging from 1 ng/ml to 100 ng/ml.
Supplied Product	Antibody pair set content: 1. Capture antibody: mouse monoclonal anti-HDAC3 (100 ug) 2. Detection antibody: biotinylated mouse monoclonal anti-HDAC3, IgG1 Kappa (50 ug) *Reagents are sufficient for at least 3-5 x 96 well plates using recommended protocols.
Storage Instruction	Store reagents of the antibody pair set at -20°C or lower. Please aliquot to avoid repeated freeze thaw cycle. Reagents should be returned to -20°C storage immediately after use.

Applications

- [ELISA Pair \(Recombinant protein\)](#)

[Protocol Download](#)

Gene Info — HDAC3

Entrez GeneID	8841
Gene Name	HDAC3
Gene Alias	HD3, RPD3, RPD3-2
Gene Description	histone deacetylase 3
Omim ID	605166
Gene Ontology	Hyperlink
Other Designations	-

Disease

- [Asthma](#)
- [Genetic Predisposition to Disease](#)
- [Schizophrenia](#)