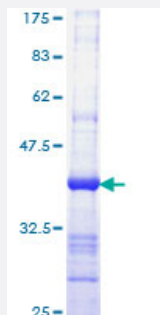


IQGAP1 (Human) Recombinant Protein (Q01)

Catalog # H00008826-Q01

Size 25 ug, 10 ug

Applications



Specification

Product Description	Human IQGAP1 partial ORF (NP_003861, 611 a.a. - 710 a.a.) recombinant protein with GST-tag at N-terminal.
Sequence	WQSNKDTQEAQKFALGIFAINAEVESGDVGKTL SALRSPDVGLYGVIPCGETYHSDLA EAKKKK LAVGDNNSKWVKHWVKGGYYYYHNLETQEGGWDEP
Host	Wheat Germ (in vitro)
Theoretical MW (kDa)	36.74
Interspecies Antigen Sequence	Mouse (90); Rat (92)
Preparation Method	in vitro wheat germ expression system
Purification	Glutathione Sepharose 4 Fast Flow
Quality Control Testing	12.5% SDS-PAGE Stained with Coomassie Blue.
Storage Buffer	50 mM Tris-HCl, 10 mM reduced Glutathione, pH=8.0 in the elution buffer.
Storage Instruction	Store at -80°C. Aliquot to avoid repeated freezing and thawing.
Note	Best use within three months from the date of receipt of this protein.

Applications

- Enzyme-linked Immunoabsorbent Assay
- Western Blot (Recombinant protein)
- Antibody Production
- Protein Array

Gene Info — IQGAP1

Entrez GeneID [8826](#)

GeneBank Accession# [NM_003870](#)

Protein Accession# [NP_003861](#)

Gene Name IQGAP1

Gene Alias HUMORFA01, KIAA0051, SAR1, p195

Gene Description IQ motif containing GTPase activating protein 1

Omim ID [603379](#)

Gene Ontology [Hyperlink](#)

Gene Summary This gene encodes a member of the IQGAP family. The protein contains four IQ domains, one calponin homology domain, one Ras-GAP domain and one WW domain. It interacts with components of the cytoskeleton, with cell adhesion molecules, and with several signaling molecules to regulate cell morphology and motility. Expression of the protein is upregulated by gene amplification in two gastric cancer cell lines. [provided by RefSeq]

Other Designations RasGAP-like with IQ motifs

Pathway

- [Adherens junction](#)
- [Regulation of actin cytoskeleton](#)