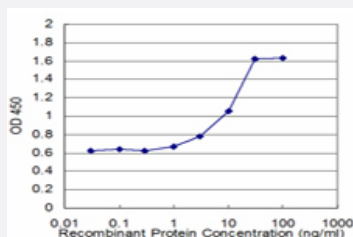


# HESX1 monoclonal antibody (M01), clone 2C4

Catalog # H00008820-M01

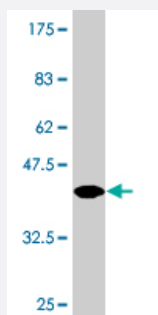
Size 100 ug

## Applications



### Sandwich ELISA (Recombinant protein)

Detection limit for recombinant GST tagged HESX1 is approximately 1ng/ml as a capture antibody.



Western Blot detection against Immunogen (37.84 KDa) .

## Specification

### Product Description

Mouse monoclonal antibody raised against a partial recombinant HESX1.

### Immunogen

HESX1 (NP\_003856.1, 1 a.a. ~ 110 a.a) partial recombinant protein with GST tag. MW of the GST tag alone is 26 KDa.

### Sequence

MSPSLQEGAQLGENKPSTCSFSIERILGLDQKKDCVPLMKPHRPWADTCSSSGKDGNLCLHVP  
NPPSGISFPSVVDHPMPEERASKYENYFSASERLSLKRELSWYRGRR

### Host

Mouse

### Reactivity

Human

Interspecies Antigen Sequence	Mouse (80); Rat (82)
Isotype	IgG2b Kappa
Quality Control Testing	Antibody Reactive Against Recombinant Protein. Western Blot detection against Immunogen (37.84 KDa) .
Storage Buffer	In 1x PBS, pH 7.4
Storage Instruction	Store at -20°C or lower. Aliquot to avoid repeated freezing and thawing.

## Applications

- Western Blot (Recombinant protein)

[Protocol Download](#)

- Sandwich ELISA (Recombinant protein)

Detection limit for recombinant GST tagged HESX1 is approximately 1ng/ml as a capture antibody.

[Protocol Download](#)

- ELISA

## Gene Info — HESX1

Entrez GeneID	<a href="#">8820</a>
GeneBank Accession#	<a href="#">NM_003865</a>
Protein Accession#	<a href="#">NP_003856.1</a>
Gene Name	HESX1
Gene Alias	ANF, MGC138294, RPX
Gene Description	HESX homeobox 1
Omim ID	<a href="#">182230 601802</a>
Gene Ontology	<a href="#">Hyperlink</a>

**Gene Summary**

This gene encodes a conserved homeobox protein that is a transcriptional repressor in the developing forebrain and pituitary gland. Mutations in this gene are associated with septo-optic dysplasia, HESX1-related growth hormone deficiency, and combined pituitary hormone deficiency. [provided by RefSeq]

**Other Designations**

Rathke pouch homeobox|homeobox, ES cell expressed 1

**Disease**

- [Hypopituitarism](#)
- [Septo-Optic Dysplasia](#)