

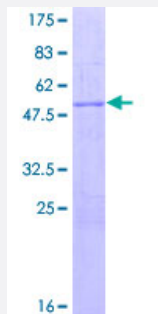
Full-Length

SAP30 (Human) Recombinant Protein (P01)

Catalog # H00008819-P01

Size 25 ug, 10 ug

Applications



Specification

Product Description	Human SAP30 full-length ORF (NP_003855.1, 1 a.a. - 220 a.a.) recombinant protein with GST-tag at N-terminal.
Sequence	MNGFTPDEMSRGGDAAA VAAVVAAAAAASAGNGTGAGTGAEVPGAGAVSAAGPPGAAGP GPGQLCCLREDGERCGRAAGNASFSKRIQKSISQKKVKIELDKSARHLYICDYHKNLIQSVNRNRK RKGSDDDGGDSPVQDIDTPEVDLYQLQVNTLRRYKRHFKLPTRPGLNKAQLVEIVGCHFRSIPVN EKDTLTYFIYSVKNDKNKSDLKVD SGVH
Host	Wheat Germ (in vitro)
Theoretical MW (kDa)	49.7
Interspecies Antigen Sequence	Mouse (95)
Preparation Method	in vitro wheat germ expression system
Purification	Glutathione Sepharose 4 Fast Flow
Quality Control Testing	12.5% SDS-PAGE Stained with Coomassie Blue.
Storage Buffer	50 mM Tris-HCl, 10 mM reduced Glutathione, pH=8.0 in the elution buffer.
Storage Instruction	Store at -80°C. Aliquot to avoid repeated freezing and thawing.

Note

Best use within three months from the date of receipt of this protein.

Applications

- Enzyme-linked Immunoabsorbent Assay
- Western Blot (Recombinant protein)
- Antibody Production
- Protein Array

Gene Info — SAP30

Entrez GeneID [8819](#)**GeneBank Accession#** [NM_003864.3](#)**Protein Accession#** [NP_003855.1](#)**Gene Name** SAP30**Gene Alias** -**Gene Description** Sin3A-associated protein, 30kDa**Omim ID** [603378](#)**Gene Ontology** [Hyperlink](#)

Gene Summary Histone acetylation plays a key role in the regulation of eukaryotic gene expression. Histone acetylation and deacetylation are catalyzed by multisubunit complexes. The protein encoded by this gene is a component of the histone deacetylase complex, which includes SIN3, SAP18, HDAC1, HDAC2, RbAp46, RbAp48, and other polypeptides. This complex is active in deacetylating core histone octamers, but inactive in deacetylating nucleosomal histones. A pseudogene of this gene is located on chromosome 3. [provided by RefSeq]

Other Designations Sin3 corepressor complex subunit SAP30|Sin3-associated polypeptide, 30kDa|histone deacetylase complex subunit SAP30