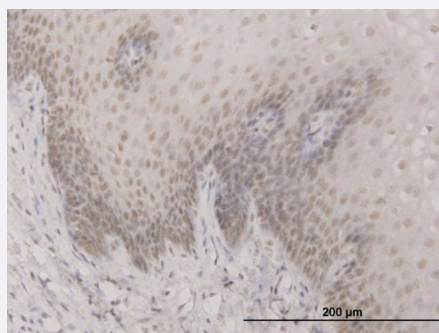


# SAP30 monoclonal antibody (M02), clone 4D2

Catalog # H00008819-M02

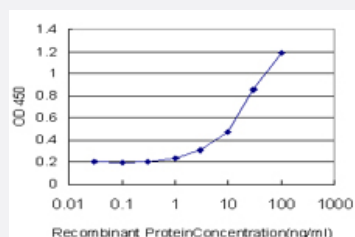
Size 100 ug

## Applications



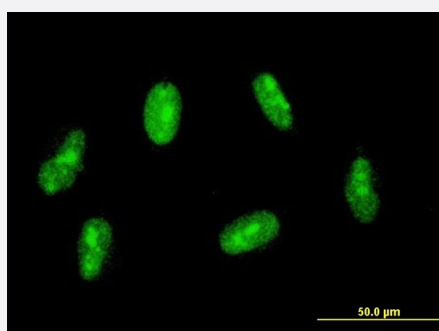
### Immunohistochemistry (Formalin/PFA-fixed paraffin-embedded sections)

Immunoperoxidase of monoclonal antibody to SAP30 on formalin-fixed paraffin-embedded human esophagus. [antibody concentration 1.5 ug/ml]



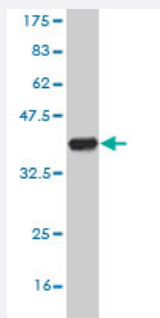
### Sandwich ELISA (Recombinant protein)

Detection limit for recombinant GST tagged SAP30 is approximately 1ng/ml as a capture antibody.



### Immunofluorescence

Immunofluorescence of monoclonal antibody to SAP30 on HeLa cell . [antibody concentration 10 ug/ml]



Western Blot detection against Immunogen (35.53 KDa) .

## Specification

<b>Product Description</b>	Mouse monoclonal antibody raised against a partial recombinant SAP30.
<b>Immunogen</b>	SAP30 (NP_003855, 131 a.a. ~ 219 a.a) partial recombinant protein with GST tag. MW of the GST tag alone is 26 KDa.
<b>Sequence</b>	SDDDGGDSPVQDIDTPEVDLYQLQVNTLRRYKRHFKLPTRPGLNKAQLVEVGCHFRSIPVNEKD TLTYFYSVKNDKNKSDLKVDSGV
<b>Host</b>	Mouse
<b>Reactivity</b>	Human
<b>Interspecies Antigen Sequence</b>	Mouse (95)
<b>Isotype</b>	IgG2b Kappa
<b>Quality Control Testing</b>	Antibody Reactive Against Recombinant Protein. Western Blot detection against Immunogen (35.53 KDa) .
<b>Storage Buffer</b>	In 1x PBS, pH 7.4
<b>Storage Instruction</b>	Store at -20°C or lower. Aliquot to avoid repeated freezing and thawing.

## Applications

- Western Blot (Recombinant protein)

[Protocol Download](#)

- Immunohistochemistry (Formalin/PFA-fixed paraffin-embedded sections)

Immunoperoxidase of monoclonal antibody to SAP30 on formalin-fixed paraffin-embedded human esophagus. [antibody concentration 1.5 ug/ml]

[Protocol Download](#)

- Sandwich ELISA (Recombinant protein)

Detection limit for recombinant GST tagged SAP30 is approximately 1ng/ml as a capture antibody.

[Protocol Download](#)

- ELISA

- Immunofluorescence

Immunofluorescence of monoclonal antibody to SAP30 on HeLa cell . [antibody concentration 10 ug/ml]

## Gene Info — SAP30

Entrez GeneID [8819](#)

GeneBank Accession# [NM\\_003864](#)

Protein Accession# [NP\\_003855](#)

Gene Name SAP30

Gene Alias -

Gene Description Sin3A-associated protein, 30kDa

Omim ID [603378](#)

Gene Ontology [Hyperlink](#)

**Gene Summary** Histone acetylation plays a key role in the regulation of eukaryotic gene expression. Histone acetylation and deacetylation are catalyzed by multisubunit complexes. The protein encoded by this gene is a component of the histone deacetylase complex, which includes SIN3, SAP18, HDAC1, HDAC2, RbAp46, RbAp48, and other polypeptides. This complex is active in deacetylating core histone octamers, but inactive in deacetylating nucleosomal histones. A pseudogene of this gene is located on chromosome 3. [provided by RefSeq]

**Other Designations** Sin3 corepressor complex subunit SAP30|Sin3-associated polypeptide, 30kDa|histone deacetylase complex subunit SAP30