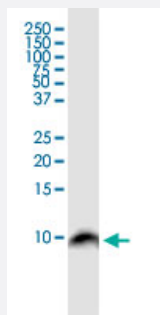


BANF1 monoclonal antibody (M07), clone M2

Catalog # H00008815-M07

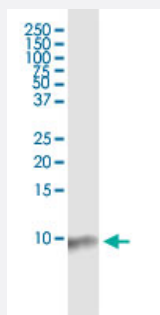
Size 100 ug

Applications



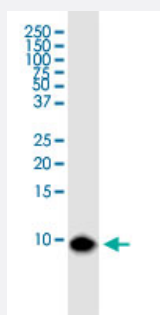
Western Blot (Cell lysate)

BANF1 monoclonal antibody (M07), clone M2. Western Blot analysis of BANF1 expression in Raw 264.7.



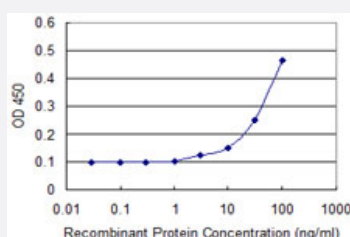
Western Blot (Cell lysate)

BANF1 monoclonal antibody (M07), clone M2. Western Blot analysis of BANF1 expression in PC-12.



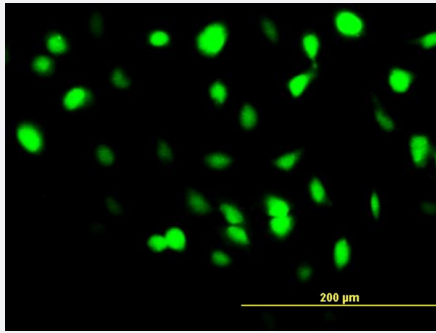
Western Blot (Cell lysate)

BANF1 monoclonal antibody (M07), clone M2. Western Blot analysis of BANF1 expression in Jurkat.



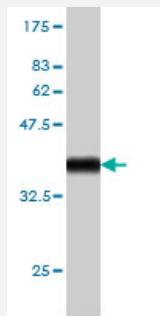
Sandwich ELISA (Recombinant protein)

Detection limit for recombinant GST tagged BANF1 is approximately 10ng/ml as a capture antibody.



Immunofluorescence

Immunofluorescence of monoclonal antibody to BANF1 on HeLa cell. [antibody concentration 10 ug/ml]



Western Blot detection against Immunogen (35.53 KDa) .

Specification

Product Description	Mouse monoclonal antibody raised against a full length recombinant BANF1.
Immunogen	BANF1 (AAH05942, 1 a.a. ~ 89 a.a) full-length recombinant protein with GST tag. MW of the GST tag alone is 26 KDa.
Sequence	MTTSQKHRDFVAEPMGEKPVGSLAGIGEVLGKKLEERGFDKAYVVLGQFLVLKKDEDLFREWLKDTCGANAKQSRDCFGCLREWCD AFL
Host	Mouse
Reactivity	Human, Mouse, Rat
Interspecies Antigen Sequence	Mouse (96); Rat (96)
Isotype	IgG2a Kappa
Quality Control Testing	Antibody Reactive Against Recombinant Protein. Western Blot detection against Immunogen (35.53 KDa) .
Storage Buffer	In 1x PBS, pH 7.4
Storage Instruction	Store at -20°C or lower. Aliquot to avoid repeated freezing and thawing.

Applications

- Western Blot (Cell lysate)

BANF1 monoclonal antibody (M07), clone M2. Western Blot analysis of BANF1 expression in Raw 264.7.

[Protocol Download](#)

- Western Blot (Cell lysate)

BANF1 monoclonal antibody (M07), clone M2. Western Blot analysis of BANF1 expression in PC-12.

[Protocol Download](#)

- Western Blot (Cell lysate)

BANF1 monoclonal antibody (M07), clone M2. Western Blot analysis of BANF1 expression in Jurkat.

[Protocol Download](#)

- Western Blot (Recombinant protein)

[Protocol Download](#)

- Sandwich ELISA (Recombinant protein)

Detection limit for recombinant GST tagged BANF1 is approximately 10ng/ml as a capture antibody.

[Protocol Download](#)

- ELISA

- Immunofluorescence

Immunofluorescence of monoclonal antibody to BANF1 on HeLa cell. [antibody concentration 10 ug/ml]

Gene Info — BANF1

Entrez GeneID	8815
---------------	----------------------

GeneBank Accession#	BC005942
---------------------	--------------------------

Protein Accession#	AAH05942
--------------------	--------------------------

Gene Name	BANF1
-----------	-------

Gene Alias	BAF, BCRP1, D14S1460, MGC111161
------------	---------------------------------

Gene Description	barrier to autointegration factor 1
Omim ID	603811
Gene Ontology	Hyperlink
Gene Summary	<p>The protein encoded by this gene was first identified by its ability to protect retroviruses from intra molecular integration and therefore promote intermolecular integration into the host cell genome. The protein forms a homodimer which localizes to both the nucleus and cytoplasm and is specifically associated with chromosomes during mitosis. This protein binds to double stranded DNA in a non-specific manner and also binds to LEM-domain containing proteins of the nuclear envelope. This protein is thought to facilitate nuclear reassembly by binding with both DNA and inner nuclear membrane proteins and thereby recruit chromatin to the nuclear periphery. Alternative splicing results in multiple transcript variants encoding the same protein</p>
Other Designations	-

Publication Reference

- [Inhibition of PP2A activity by H2O2 during mitosis disrupts nuclear envelope reassembly and alters nuclear shape.](#)

Ahn JH, Cho MG, Sohn S, Lee JH.

Experimental & Molecular Medicine 2019 Jun; 51(6):64.

Application: IF, WB-Tr, Human, HeLa cells

- [Functional Disruption of the Moloney Murine Leukemia Virus Preintegration Complex by Vaccinia-related Kinases.](#)

Suzuki Y, Ogawa K, Koyanagi Y, Suzuki Y.

The Journal of Biological Chemistry 2010 Jul; 285(31):24032.

Application: IP, KA, WB, Mouse, NIH/3T3 cells, Recombinant proteins