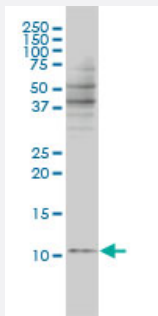


BANF1 monoclonal antibody (M01), clone 3F10-4G12

Catalog # H00008815-M01

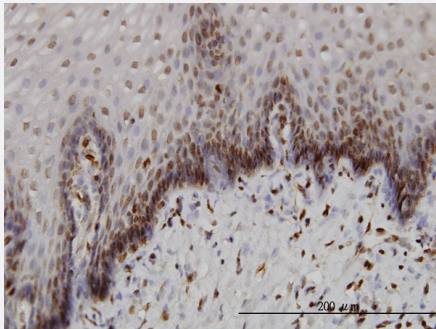
Size 100 ug

Applications



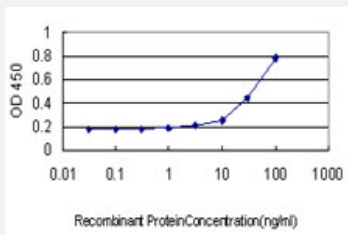
Western Blot (Cell lysate)

BANF1 monoclonal antibody (M01), clone 3F10-4G12 Western Blot analysis of BANF1 expression in Jurkat (Cat # L017V1).



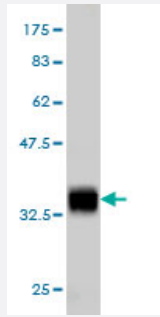
Immunohistochemistry (Formalin/PFA-fixed paraffin-embedded sections)

Immunoperoxidase of monoclonal antibody to BANF1 on formalin-fixed paraffin-embedded human esophagus. [antibody concentration 3 ug/ml]



Sandwich ELISA (Recombinant protein)

Detection limit for recombinant GST tagged BANF1 is approximately 1 ng/ml as a capture antibody.



Western Blot detection against Immunogen (35.53 KDa) .

Specification

Product Description	Mouse monoclonal antibody raised against a full length recombinant BANF1 .
Immunogen	BANF1 (AAH05942, 1 a.a. ~ 89 a.a) full-length recombinant protein with GST tag. MW of the GST tag alone is 26 KDa.
Sequence	MTTSQKHRDFVAEPMGEKPVGSLAGIGEVLGKKLEERGFDKAYVVLGQFLVLKKDEDLFREWLK DTCGANAKQSRDCFGCLREWCD AFL
Host	Mouse
Reactivity	Human
Interspecies Antigen Sequence	Mouse (96); Rat (96)
Isotype	IgG2a Kappa
Quality Control Testing	Antibody Reactive Against Recombinant Protein. Western Blot detection against Immunogen (35.53 KDa) .
Storage Buffer	In 1x PBS, pH 7.4
Storage Instruction	Store at -20°C or lower. Aliquot to avoid repeated freezing and thawing.

Applications

- Western Blot (Cell lysate)

BANF1 monoclonal antibody (M01), clone 3F10-4G12 Western Blot analysis of BANF1 expression in Jurkat (Cat # L017V1).

[Protocol Download](#)

- Western Blot (Recombinant protein)

[Protocol Download](#)

- Immunohistochemistry (Formalin/PFA-fixed paraffin-embedded sections)

Immunoperoxidase of monoclonal antibody to BANF1 on formalin-fixed paraffin-embedded human esophagus. [antibody concentration 3 ug/ml]

[Protocol Download](#)

- Sandwich ELISA (Recombinant protein)

Detection limit for recombinant GST tagged BANF1 is approximately 1 ng/ml as a capture antibody.

[Protocol Download](#)

- ELISA

Gene Info — BANF1

Entrez GeneID [8815](#)

GeneBank Accession# [BC005942](#)

Protein Accession# [AAH05942](#)

Gene Name BANF1

Gene Alias BAF, BCRP1, D14S1460, MGC111161

Gene Description barrier to autointegration factor 1

Omim ID [603811](#)

Gene Ontology [Hyperlink](#)

Gene Summary

The protein encoded by this gene was first identified by its ability to protect retroviruses from intra molecular integration and therefore promote intermolecular integration into the host cell genome. The protein forms a homodimer which localizes to both the nucleus and cytoplasm and is specifically associated with chromosomes during mitosis. This protein binds to double stranded DNA in a non-specific manner and also binds to LEM-domain containing proteins of the nuclear envelope. This protein is thought to facilitate nuclear reassembly by binding with both DNA and inner nuclear membrane proteins and thereby recruit chromatin to the nuclear periphery. Alternative splicing results in multiple transcript variants encoding the same protein

Other Designations -

Publication Reference

- [Nucleoplasmic lamin C rapidly accumulates at sites of nuclear envelope rupture with BAF and cGAS.](#)

Yohei Kono, Stephen A Adam, Yuko Sato, Karen L Reddy, Yixian Zheng, Ohad Medalia, Robert D Goldman, Hiroshi Kimura, Takeshi Shimi.

The Journal of cell biology 2022 Dec; 221(12):e202201024.

Application: ICC, Mouse, Mouse Embryonic Fibroblast (MEF)

- [Depletion of autophagy receptor p62/SQSTM1 enhances the efficiency of gene delivery in mammalian cells.](#)

Tsuchiya M, Ogawa H, Koujin T, Kobayashi S, Mori C, Hiraoka Y, Haraguchi T.

FEBS Letters 2016 Jul; 590(16):2671.

Application: IF, Human, HeLa/GFP-LC3 cells

- [Dephosphorylation of barrier-to-autointegration-factor by protein phosphatase 4 and its role in cell mitosis.](#)

Zhuang X, Semenova E, Maric D, Craigie R.

The Journal of Biological Chemistry 2014 Jan; 289(2):1119.

Application: IF, WB-Ce, WB-Tr, Human, HEK 293 cells