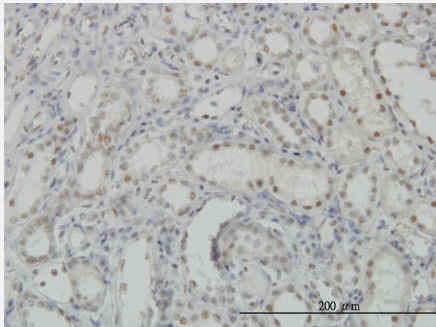


CDKL1 monoclonal antibody (M05), clone 2H6

Catalog # H00008814-M05

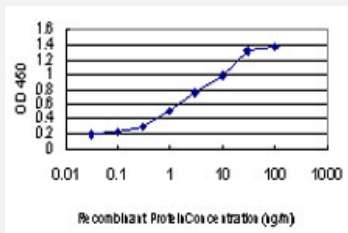
Size 100 ug

Applications



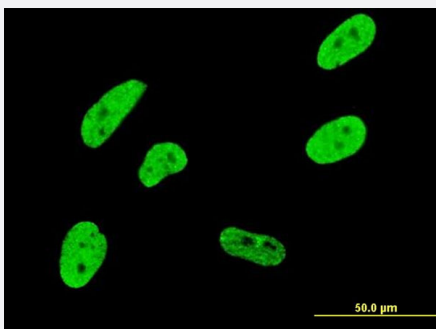
Immunohistochemistry (Formalin/PFA-fixed paraffin-embedded sections)

Immunoperoxidase of monoclonal antibody to CDKL1 on formalin-fixed paraffin-embedded human kidney. [antibody concentration 5 ug/ml]



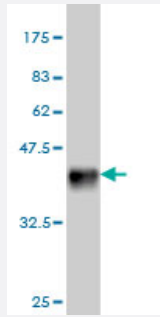
Sandwich ELISA (Recombinant protein)

Detection limit for recombinant GST tagged CDKL1 is approximately 0.1ng/ml as a capture antibody.



Immunofluorescence

Immunofluorescence of monoclonal antibody to CDKL1 on HeLa cell . [antibody concentration 10 ug/ml]



Western Blot detection against Immunogen (36.63 KDa) .

Specification

Product Description	Mouse monoclonal antibody raised against a partial recombinant CDKL1.
Immunogen	CDKL1 (NP_004187, 259 a.a. ~ 358 a.a) partial recombinant protein with GST tag. MW of the GST tag alone is 26 KDa.
Sequence	YPALGLLKGCLHMDPTQRLTCEQLLHHPYFENIREIEDLAKEHNKPTRKTLRKSRKHHCFTETSKL QYLPQLTGSSILPALDNKKYYCDTKKLNRYRFPNI
Host	Mouse
Reactivity	Human
Interspecies Antigen Sequence	Mouse (69); Rat (67)
Isotype	IgG2a Kappa
Quality Control Testing	Antibody Reactive Against Recombinant Protein. Western Blot detection against Immunogen (36.63 KDa) .
Storage Buffer	In 1x PBS, pH 7.4
Storage Instruction	Store at -20°C or lower. Aliquot to avoid repeated freezing and thawing.

Applications

- Western Blot (Recombinant protein)

[Protocol Download](#)

- Immunohistochemistry (Formalin/PFA-fixed paraffin-embedded sections)

Immunoperoxidase of monoclonal antibody to CDKL1 on formalin-fixed paraffin-embedded human kidney. [antibody concentration 5 ug/ml]

[Protocol Download](#)

- Sandwich ELISA (Recombinant protein)

Detection limit for recombinant GST tagged CDKL1 is approximately 0.1ng/ml as a capture antibody.

[Protocol Download](#)

- ELISA

- Immunofluorescence

Immunofluorescence of monoclonal antibody to CDKL1 on HeLa cell . [antibody concentration 10 ug/ml]

Gene Info — CDKL1

Entrez GeneID [8814](#)

GeneBank Accession# [NM_004196](#)

Protein Accession# [NP_004187](#)

Gene Name CDKL1

Gene Alias KKIALRE, p42

Gene Description cyclin-dependent kinase-like 1 (CDC2-related kinase)

Omim ID [603441](#)

Gene Ontology [Hyperlink](#)

Gene Summary This gene product is a member of a large family of CDC2-related serine/threonine protein kinases. It accumulates primarily in the nucleus. Alternative splice variants encoding different protein isoforms have been described, but their full-length nature has not been determined. [provided by RefSeq]

Other Designations CDC2-related kinase 1|cyclin-dependent kinase-like 1|serine/threonine protein kinase KKIALRE

Disease

- [Tobacco Use Disorder](#)