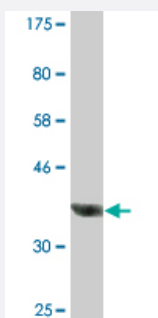


# CDKL1 monoclonal antibody (M02A), clone 8B2

Catalog # H00008814-M02A

Size 200 uL

## Applications



Western Blot detection against Immunogen (36.63 KDa) .

## Specification

<b>Product Description</b>	Mouse monoclonal antibody raised against a partial recombinant CDKL1.
<b>Immunogen</b>	CDKL1 (NP_004187, 259 a.a. ~ 358 a.a) partial recombinant protein with GST tag. MW of the GST tag alone is 26 KDa.
<b>Sequence</b>	YPALGLLKGCLHMDPTQRLTCEQLLHHPYFENIREIEDLAKEHKNKPTRKTLRKSRRKHHCFETETSKLQYLPQLTGSSILPALDNKKYYCDTKKLNRYRFPNI
<b>Host</b>	Mouse
<b>Reactivity</b>	Human
<b>Interspecies Antigen Sequence</b>	Mouse (69); Rat (67)
<b>Isotype</b>	IgG2b Kappa
<b>Quality Control Testing</b>	Antibody Reactive Against Recombinant Protein. Western Blot detection against Immunogen (36.63 KDa) .
<b>Storage Buffer</b>	In ascites fluid
<b>Storage Instruction</b>	Store at -20°C or lower. Aliquot to avoid repeated freezing and thawing.

## Applications

- Western Blot (Recombinant protein)

[Protocol Download](#)

- ELISA

## Gene Info — CDKL1

Entrez GeneID	<a href="#">8814</a>
GeneBank Accession#	<a href="#">NM_004196</a>
Protein Accession#	<a href="#">NP_004187</a>
Gene Name	CDKL1
Gene Alias	KKIALRE, p42
Gene Description	cyclin-dependent kinase-like 1 (CDC2-related kinase)
Omim ID	<a href="#">603441</a>
Gene Ontology	<a href="#">Hyperlink</a>
Gene Summary	This gene product is a member of a large family of CDC2-related serine/threonine protein kinases. It accumulates primarily in the nucleus. Alternative splice variants encoding different protein isoforms have been described, but their full-length nature has not been determined. [provided by RefSeq]
Other Designations	CDC2-related kinase 1 cyclin-dependent kinase-like 1 serine/threonine protein kinase KKIALRE

## Disease

- [Tobacco Use Disorder](#)