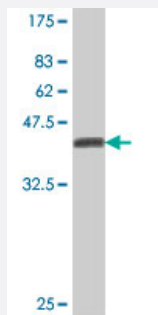


CDKL1 polyclonal antibody (A01)

Catalog # H00008814-A01

Size 50 uL

Applications



Western Blot detection against Immunogen (37 KDa) .

Specification

Product Description	Mouse polyclonal antibody raised against a partial recombinant CDKL1.
Immunogen	CDKL1 (NP_004187, 259 a.a. ~ 358 a.a) partial recombinant protein with GST tag.
Sequence	YPALGLLKGCLHMDPTQRLTCEQLLHHPYFENIREIEDLAKEHNKPTRKTLRKSRKHHCFTETSKL QYLPQLTGSSILPALDNKKYYCDTKKLNRYRFPNI
Host	Mouse
Reactivity	Human
Interspecies Antigen Sequence	Mouse (69); Rat (67)
Quality Control Testing	Antibody Reactive Against Recombinant Protein. Western Blot detection against Immunogen (37 KDa) .
Storage Buffer	50 % glycerol
Storage Instruction	Store at -20°C or lower. Aliquot to avoid repeated freezing and thawing.

Applications

- Western Blot (Recombinant protein)

[Protocol Download](#)

- ELISA

Gene Info — CDKL1

Entrez GeneID [8814](#)

GeneBank Accession# [NM_004196](#)

Protein Accession# [NP_004187](#)

Gene Name CDKL1

Gene Alias KKIALRE, p42

Gene Description cyclin-dependent kinase-like 1 (CDC2-related kinase)

Omim ID [603441](#)

Gene Ontology [Hyperlink](#)

Gene Summary This gene product is a member of a large family of CDC2-related serine/threonine protein kinases. It accumulates primarily in the nucleus. Alternative splice variants encoding different protein isoforms have been described, but their full-length nature has not been determined. [provided by RefSeq]

Other Designations CDC2-related kinase 1|cyclin-dependent kinase-like 1|serine/threonine protein kinase KKIALRE

Disease

- [Tobacco Use Disorder](#)