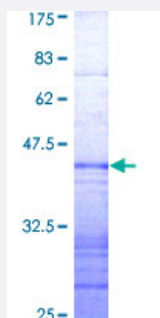


TIF1 (Human) Recombinant Protein (Q01)

Catalog # H00008805-Q01

Size 25 ug, 10 ug

Applications



Specification

Product Description	Human TIF1 partial ORF (AAH28689, 432 a.a. - 569 a.a.) recombinant protein with GST-tag at N-terminal.
Sequence	PQMPKQNPVVEQNSQPPSGLSSNQLSKFPTQISLAQLRLQHMQQVMAQRQQVQRRPAPVGL PNPRMQGPQQPSISHQQPPRLINFQNHSPKPNPVLPPHPQQLRYPPNQNIQRQAIPNPLQMA FLAQQAQKW
Host	Wheat Germ (in vitro)
Theoretical MW (kDa)	40.81
Interspecies Antigen Sequence	Mouse (93)
Preparation Method	in vitro wheat germ expression system
Purification	Glutathione Sepharose 4 Fast Flow
Quality Control Testing	12.5% SDS-PAGE Stained with Coomassie Blue.
Storage Buffer	50 mM Tris-HCl, 10 mM reduced Glutathione, pH=8.0 in the elution buffer.
Storage Instruction	Store at -80°C. Aliquot to avoid repeated freezing and thawing.
Note	Best use within three months from the date of receipt of this protein.

Applications

- Enzyme-linked Immunoabsorbent Assay
- Western Blot (Recombinant protein)
- Antibody Production
- Protein Array

Gene Info — TRIM24

Entrez GeneID [8805](#)

GeneBank Accession# [BC028689](#)

Protein Accession# [AAH28689](#)

Gene Name TRIM24

Gene Alias PTC6, RNF82, TF1A, TIF1, TIF1A, TIF1ALPHA, hTIF1

Gene Description tripartite motif-containing 24

Omim ID [188550 603406](#)

Gene Ontology [Hyperlink](#)

Gene Summary The protein encoded by this gene mediates transcriptional control by interaction with the activation function 2 (AF2) region of several nuclear receptors, including the estrogen, retinoic acid, and vitamin D3 receptors. The protein localizes to nuclear bodies and is thought to associate with chromatin and heterochromatin-associated factors. The protein is a member of the tripartite motif (TRIM) family. The TRIM motif includes three zinc-binding domains - a RING, a B-box type 1 and a B-box type 2 - and a coiled-coil region. Two alternatively spliced transcript variants encoding different isoforms have been described for this gene. [provided by RefSeq]

Other Designations transcriptional intermediary factor 1|transcriptional intermediary factor 1 alpha|tripartite motif protein 24