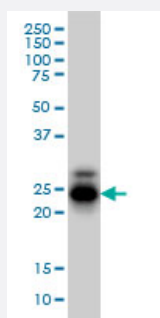


# CREG1 monoclonal antibody (M01), clone 1B7

Catalog # H00008804-M01

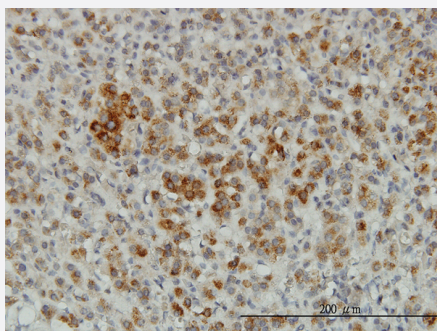
Size 100 ug

## Applications



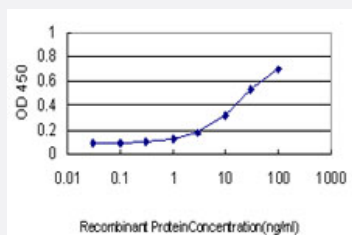
### Western Blot (Cell lysate)

CREG1 monoclonal antibody (M01), clone 1B7 Western Blot analysis of CREG1 expression in HL-60 ( Cat # L014V1 ).



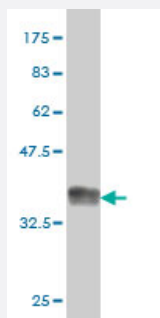
### Immunohistochemistry (Formalin/PFA-fixed paraffin-embedded sections)

Immunoperoxidase of monoclonal antibody to CREG1 on formalin-fixed paraffin-embedded human adrenal gland. [antibody concentration 3 ug/ml]



### Sandwich ELISA (Recombinant protein)

Detection limit for recombinant GST tagged CREG1 is approximately 0.3ng/ml as a capture antibody.



Western Blot detection against Immunogen (36.74 KDa) .

## Specification

<b>Product Description</b>	Mouse monoclonal antibody raised against a partial recombinant CREG1.
<b>Immunogen</b>	CREG1 (NP_003842, 121 a.a. ~ 220 a.a) partial recombinant protein with GST tag. MW of the GST tag alone is 26 KDa.
<b>Sequence</b>	PYATLTMTLAQTNFCKKHGFDPQSPLCVHMLSGTVTKVNETEMDIAKHSLFIRHPEMKTWPSSHN WFFAKLNIITNMWVLDYFGGPKIVTPEEYYNVTVQ
<b>Host</b>	Mouse
<b>Reactivity</b>	Human
<b>Interspecies Antigen Sequence</b>	Mouse (76); Rat (76)
<b>Isotype</b>	IgG1 Kappa
<b>Quality Control Testing</b>	Antibody Reactive Against Recombinant Protein. Western Blot detection against Immunogen (36.74 KDa) .
<b>Storage Buffer</b>	In 1x PBS, pH 7.4
<b>Storage Instruction</b>	Store at -20°C or lower. Aliquot to avoid repeated freezing and thawing.

## Applications

- Western Blot (Cell lysate)

CREG1 monoclonal antibody (M01), clone 1B7 Western Blot analysis of CREG1 expression in HL-60 ( Cat # L014V1 ).

[Protocol Download](#)

- Western Blot (Recombinant protein)

[Protocol Download](#)

- Immunohistochemistry (Formalin/PFA-fixed paraffin-embedded sections)

Immunoperoxidase of monoclonal antibody to CREG1 on formalin-fixed paraffin-embedded human adrenal gland. [antibody concentration 3 ug/ml]

[Protocol Download](#)

- Sandwich ELISA (Recombinant protein)

Detection limit for recombinant GST tagged CREG1 is approximately 0.3ng/ml as a capture antibody.

[Protocol Download](#)

- ELISA

## Gene Info — CREG1

Entrez GeneID [8804](#)

GeneBank Accession# [NM\\_003851](#)

Protein Accession# [NP\\_003842](#)

Gene Name CREG1

Gene Alias CREG

Gene Description cellular repressor of E1A-stimulated genes 1

Gene Ontology [Hyperlink](#)

**Gene Summary** The adenovirus E1A protein both activates and represses gene expression to promote cellular proliferation and inhibit differentiation. The protein encoded by this gene antagonizes transcriptional activation and cellular transformation by E1A. This protein shares limited sequence similarity with E1A and binds both the general transcription factor TBP and the tumor suppressor pRb in vitro. This gene may contribute to the transcriptional control of cell growth and differentiation. [provided by RefSeq]

**Other Designations** OTTHUMP00000032606|cellular repressor of E1A-stimulated genes

## Disease

- [Genetic Predisposition to Disease](#)
- [Hypertension](#)
- [Osteoporosis](#)