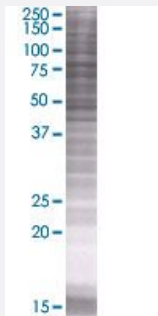


SCEL 293T Cell Transient Overexpression Lysate(Denatured)

Catalog # H00008796-T01

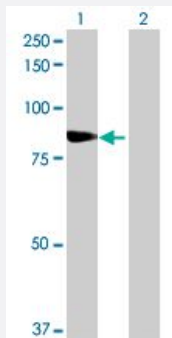
Size 100 uL

Applications



SDS-PAGE Gel

SCEL transfected lysate.



Western Blot

Lane 1: SCEL transfected lysate (75.3 KDa)

Lane 2: Non-transfected lysate.

Specification

Transfected Cell Line	293T
Plasmid	pCMV-SCEL full-length
Host	Human
Theoretical MW (kDa)	75.3
Interspecies Antigen Sequence	Mouse (59); Rat (60)

Quality Control Testing

Transient overexpression cell lysate was tested with Anti-SCEL antibody ([H00008796-B01](#)) by Western Blots.
SDS-PAGE Gel
SCEL transfected lysate.
Western Blot
Lane 1: SCEL transfected lysate (75.3 KDa)
Lane 2: Non-transfected lysate.

Storage Buffer

1X Sample Buffer (50 mM Tris-HCl, 2% SDS, 10% glycerol, 300 mM 2-mercaptoethanol, 0.01% Bromophenol blue)

Storage Instruction

Store at -80°C. Aliquot to avoid repeated freezing and thawing.

Applications

- Western Blot

Gene Info — SCEL

Entrez GeneID[8796](#)**GeneBank Accession#**[BC047536](#)**Protein Accession#**[AAH47536](#)**Gene Name**

SCEL

Gene Alias

FLJ21667, MGC22531

Gene Description

sciellin

Omim ID[604112](#)**Gene Ontology**[Hyperlink](#)**Gene Summary**

The protein encoded by this gene is a precursor to the cornified envelope of terminally differentiated keratinocytes. This protein localizes to the periphery of cells and may function in the assembly or regulation of proteins in the cornified envelope. Transcript variants encoding different isoforms exist. A transcript variant utilizing an alternative polyA signal has been described in the literature, but its full-length nature has not been determined. [provided by RefSeq]

Other Designations

OTTHUMP00000018525|OTTHUMP00000018526