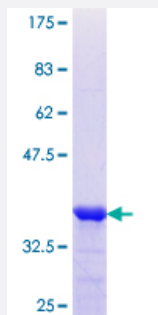


SCEL (Human) Recombinant Protein (Q01)

Catalog # H00008796-Q01

Size 25 ug, 10 ug

Applications



Specification

Product Description	Human SCEL partial ORF (NP_003834.2, 2 a.a. - 97 a.a.) recombinant protein with GST-tag at N-terminal.
Sequence	SNVTLRKMSPTGNEMKSTTQGTTRKQQDFHEVNKRRTFLQDNSWIKKRPEEEKDENYGRVVLNR HNSHDALDRKVNERDVPKATISRYSSDDLDR
Host	Wheat Germ (in vitro)
Theoretical MW (kDa)	36.3
Interspecies Antigen Sequence	Mouse (59); Rat (60)
Preparation Method	in vitro wheat germ expression system
Purification	Glutathione Sepharose 4 Fast Flow
Quality Control Testing	12.5% SDS-PAGE Stained with Coomassie Blue.
Storage Buffer	50 mM Tris-HCl, 10 mM reduced Glutathione, pH=8.0 in the elution buffer.
Storage Instruction	Store at -80°C. Aliquot to avoid repeated freezing and thawing.
Note	Best use within three months from the date of receipt of this protein.

Applications

- Enzyme-linked Immunoabsorbent Assay
- Western Blot (Recombinant protein)
- Antibody Production
- Protein Array

Gene Info — SCEL

Entrez GeneID	8796
GeneBank Accession#	NM_003843
Protein Accession#	NP_003834.2
Gene Name	SCEL
Gene Alias	FLJ21667, MGC22531
Gene Description	sciellin
Omim ID	604112
Gene Ontology	Hyperlink
Gene Summary	The protein encoded by this gene is a precursor to the cornified envelope of terminally differentiated keratinocytes. This protein localizes to the periphery of cells and may function in the assembly or regulation of proteins in the cornified envelope. Transcript variants encoding different isoforms exist. A transcript variant utilizing an alternative polyA signal has been described in the literature, but its full-length nature has not been determined. [provided by RefSeq]
Other Designations	OTTHUMP00000018525 OTTHUMP00000018526