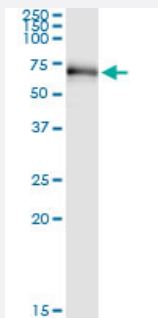


RIOK3 (Human) IP-WB Antibody Pair

Catalog # H00008780-PW2

Size 1 Set

Applications



Immunoprecipitation of RIOK3 transfected lysate using rabbit polyclonal anti-RIOK3 and Protein A Magnetic Bead ([U0007](#)), and immunoblotted with mouse purified polyclonal anti-RIOK3.

Specification

Product Description	This IP-WB antibody pair set comes with one antibody for immunoprecipitation and another to detect the precipitated protein in western blot.
Reactivity	Human
Interspecies Antigen Sequence	Mouse (94); Rat (94)
Quality Control Testing	Immunoprecipitation-Western Blot (IP-WB) Immunoprecipitation of RIOK3 transfected lysate using rabbit polyclonal anti-RIOK3 and Protein A Magnetic Bead (U0007), and immunoblotted with mouse purified polyclonal anti-RIOK3.
Supplied Product	Antibody pair set content: 1. Antibody pair for IP: rabbit polyclonal anti-RIOK3 (300 ul) 2. Antibody pair for WB: mouse purified polyclonal anti-RIOK3 (50 ug)
Storage Instruction	Store reagents of the antibody pair set at -20°C or lower. Please aliquot to avoid repeated freeze thaw cycle. Reagents should be returned to -20°C storage immediately after use.

Applications

- Immunoprecipitation-Western Blot

[Protocol Download](#)

Gene Info — RIOK3

Entrez GeneID [8780](#)

Gene Name RIOK3

Gene Alias DKFZp779L1370, SUDD

Gene Description RIO kinase 3 (yeast)

Omim ID [603579](#)

Gene Ontology [Hyperlink](#)

Gene Summary This gene was identified by the similarity of its product to the Aspergillus nidulans SUDD protein, an extragenic suppressor of the heat-sensitive bimD6 mutation that fails to attach properly to the spindle microtubules at a restrictive temperature. The specific function of this gene has not yet been determined. [provided by RefSeq]

Other Designations homolog of the Aspergillus nidulans sudD gene product|sudD (suppressor of bimD6, Aspergillus nidulans) homolog|sudD suppressor of Aspergillus nidulans bimD6 homolog|sudD suppressor of bimD6 homolog