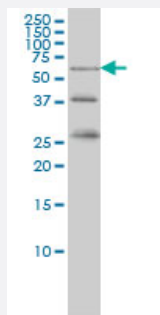


RIOK3 monoclonal antibody (M02), clone 3G11

Catalog # H00008780-M02

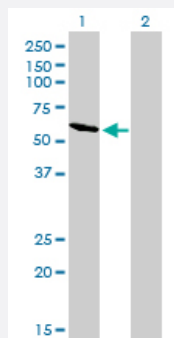
Size 100 ug

Applications



Western Blot (Cell lysate)

RIOK3 monoclonal antibody (M02), clone 3G11 Western Blot analysis of RIOK3 expression in K-562 (Cat # L009V1).

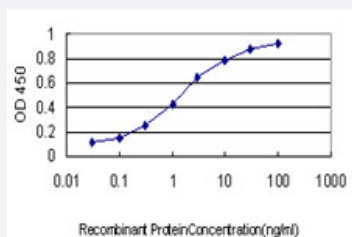


Western Blot (Transfected lysate)

Western Blot analysis of RIOK3 expression in transfected 293T cell line by RIOK3 monoclonal antibody (M02), clone 3G11.

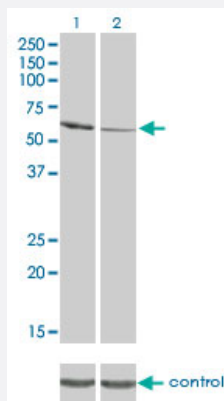
Lane 1: RIOK3 transfected lysate(59.1 KDa).

Lane 2: Non-transfected lysate.



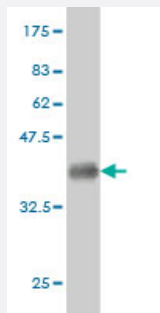
Sandwich ELISA (Recombinant protein)

Detection limit for recombinant GST tagged RIOK3 is approximately 0.03ng/ml as a capture antibody.



RNAi Knockdown (Antibody validated)

Western blot analysis of RIOK3 over-expressed 293 cell line, cotransfected with RIOK3 Validated Chimera RNAi (Cat # H00008780-R01V) (Lane 2) or non-transfected control (Lane 1). Blot probed with RIOK3 monoclonal antibody (M02) clone 3G11 (Cat # H00008780-M02). GAPDH (36.1 kDa) used as specificity and loading control.



Western Blot detection against Immunogen (37.29 KDa) .

Specification

Product Description	Mouse monoclonal antibody raised against a partial recombinant RIOK3.
Immunogen	RIOK3 (AAH39729, 411 a.a. ~ 516 a.a) partial recombinant protein with GST tag. MW of the GST tag alone is 26 KDa.
Sequence	NMLWHAGKVWLIDVSQSVEPTHPHGLEFLFRDCRNVSQKGGVKEALSERELFNAVSGLNITADN EADFLAEIEALEKMNEHDHVQKNGRKAASFLKDDGDPPLLYDE
Host	Mouse
Reactivity	Human
Interspecies Antigen Sequence	Mouse (94); Rat (94)
Isotype	IgG1 Kappa
Quality Control Testing	Antibody Reactive Against Recombinant Protein. Western Blot detection against Immunogen (37.29 KDa) .
Storage Buffer	In 1x PBS, pH 7.4
Storage Instruction	Store at -20°C or lower. Aliquot to avoid repeated freezing and thawing.

Applications

- Western Blot (Cell lysate)

RIOK3 monoclonal antibody (M02), clone 3G11 Western Blot analysis of RIOK3 expression in K-562 (Cat # L009V1).

[Protocol Download](#)

- Western Blot (Transfected lysate)

Western Blot analysis of RIOK3 expression in transfected 293T cell line by RIOK3 monoclonal antibody (M02), clone 3G11.

Lane 1: RIOK3 transfected lysate(59.1 KDa).

Lane 2: Non-transfected lysate.

[Protocol Download](#)

- Western Blot (Recombinant protein)

[Protocol Download](#)

- Sandwich ELISA (Recombinant protein)

Detection limit for recombinant GST tagged RIOK3 is approximately 0.03ng/ml as a capture antibody.

[Protocol Download](#)

- ELISA

- RNAi Knockdown (Antibody validated)

Western blot analysis of RIOK3 over-expressed 293 cell line, cotransfected with RIOK3 Validated Chimera RNAi (Cat # H00008780-R01V) (Lane 2) or non-transfected control (Lane 1). Blot probed with RIOK3 monoclonal antibody (M02) clone 3G11 (Cat # H00008780-M02). GAPDH (36.1 kDa) used as specificity and loading control.

[Protocol Download](#)

Gene Info — RIOK3

Entrez GeneID	8780
---------------	----------------------

GeneBank Accession#	BC039729
---------------------	--------------------------

Protein Accession#	AAH39729
--------------------	--------------------------

Gene Name	RIOK3
-----------	-------

Gene Alias	DKFZp779L1370, SUDD
------------	---------------------

Gene Description	RIO kinase 3 (yeast)
Omim ID	603579
Gene Ontology	Hyperlink
Gene Summary	<p>This gene was identified by the similarity of its product to the Aspergillus nidulans SUDD protein, an extragenic suppressor of the heat-sensitive bimD6 mutation that fails to attach properly to the spindle microtubules at a restrictive temperature. The specific function of this gene has not yet been determined. [provided by RefSeq]</p>
Other Designations	homolog of the Aspergillus nidulans sudD gene product sudD (suppressor of bimD6, Aspergillus nidulans) homolog sudD suppressor of Aspergillus nidulans bimD6 homolog sudD suppressor of bimD6 homolog