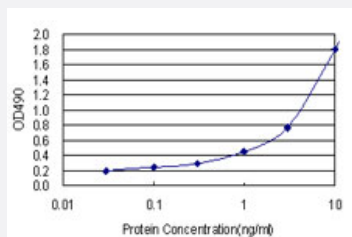


RIOK3 (Human) Matched Antibody Pair

Catalog # H00008780-AP21

Size 1 Set

Applications



Sandwich ELISA detection sensitivity ranging from 0.1 ng/ml to 100 ng/ml.

Specification

Product Description	This antibody pair set comes with a matched antibody pair to detect and quantify the protein level of human RIOK3.
Reactivity	Human
Interspecies Antigen Sequence	Mouse (94); Rat (94)
Quality Control Testing	Standard curve using recombinant protein (H00008780-P01) as an analyte. Sandwich ELISA detection sensitivity ranging from 0.1 ng/ml to 100 ng/ml.
Supplied Product	Antibody pair set content: 1. Capture antibody: rabbit MaxPab® affinity purified polyclonal anti-RIOK3 (100 ug) 2. Detection antibody: mouse purified polyclonal anti-RIOK3 (20 ug) *Reagents are sufficient for at least 1-2 x 96 well plates using recommended protocols.
Storage Instruction	Store reagents of the antibody pair set at -20°C or lower. Please aliquot to avoid repeated freeze thaw cycle. Reagents should be returned to -20°C storage immediately after use.

Applications

- ELISA Pair (Recombinant protein)

[Protocol Download](#)

Gene Info — RIOK3

Entrez GeneID [8780](#)

Gene Name RIOK3

Gene Alias DKFZp779L1370, SUDD

Gene Description RIO kinase 3 (yeast)

Omim ID [603579](#)

Gene Ontology [Hyperlink](#)

Gene Summary This gene was identified by the similarity of its product to the Aspergillus nidulans SUDD protein, an extragenic suppressor of the heat-sensitive bimD6 mutation that fails to attach properly to the spindle microtubules at a restrictive temperature. The specific function of this gene has not yet been determined. [provided by RefSeq]

Other Designations homolog of the Aspergillus nidulans sudD gene product|sudD (suppressor of bimD6, Aspergillus nidulans) homolog|sudD suppressor of Aspergillus nidulans bimD6 homolog|sudD suppressor of bimD6 homolog