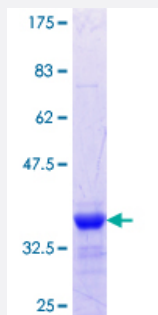


# MTMR1 (Human) Recombinant Protein (Q01)

Catalog # H00008776-Q01

Size 25 ug, 10 ug

## Applications



## Specification

<b>Product Description</b>	Human MTMR1 partial ORF ( NP_003819.1, 39 a.a. - 112 a.a.) recombinant protein with GST-tag at N-terminal.
<b>Sequence</b>	SRQPSVETLDSP TGSHVEWCKQLIAATISSQISGSVTSENVSRDYKALRDGNKLAQMEEAPLFPG ESIKAVKD
<b>Host</b>	Wheat Germ (in vitro)
<b>Theoretical MW (kDa)</b>	33.88
<b>Interspecies Antigen Sequence</b>	Mouse (92); Rat (90)
<b>Preparation Method</b>	<a href="#">in vitro wheat germ expression system</a>
<b>Purification</b>	Glutathione Sepharose 4 Fast Flow
<b>Quality Control Testing</b>	12.5% SDS-PAGE Stained with Coomassie Blue.
<b>Storage Buffer</b>	50 mM Tris-HCl, 10 mM reduced Glutathione, pH=8.0 in the elution buffer.
<b>Storage Instruction</b>	Store at -80°C. Aliquot to avoid repeated freezing and thawing.
<b>Note</b>	Best use within three months from the date of receipt of this protein.

## Applications

- Enzyme-linked Immunoabsorbent Assay
- Western Blot (Recombinant protein)
- Antibody Production
- Protein Array

## Gene Info — MTMR1

Entrez GeneID [8776](#)

GeneBank Accession# [NM\\_003828](#)

Protein Accession# [NP\\_003819.1](#)

Gene Name MTMR1

Gene Alias -

Gene Description myotubularin related protein 1

Omim ID [300171](#)

Gene Ontology [Hyperlink](#)

**Gene Summary** This gene encodes a member of the myotubularin related family of proteins. Members of this family contain the consensus sequence for the active site of protein tyrosine phosphatases. Alternatively spliced variants have been described but their biological validity has not been determined. [provided by RefSeq]

**Other Designations** OTTHUMP00000025864|myotubularin-related protein 1

## Pathway

- [Fructose and mannose metabolism](#)
- [Metabolic pathways](#)
- [Riboflavin metabolism](#)
- [Thiamine metabolism](#)