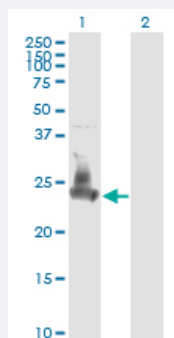


# SNAP23 monoclonal antibody (M01), clone 2F5-3D4

Catalog # H00008773-M01

Size 100 ug

## Applications

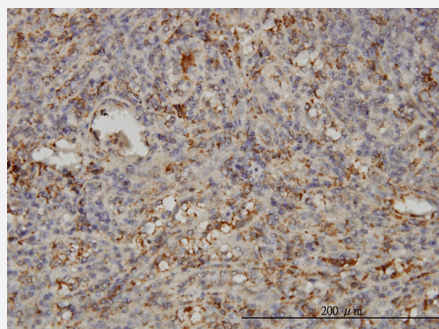


### Western Blot (Transfected lysate)

Western Blot analysis of SNAP23 expression in transfected 293T cell line by SNAP23 monoclonal antibody (M01), clone 2F5-3D4.

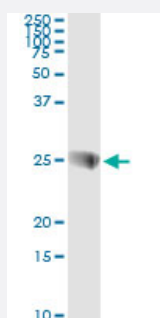
Lane 1: SNAP23 transfected lysate (Predicted MW: 23.4 kDa).

Lane 2: Non-transfected lysate.



### Immunohistochemistry (Formalin/PFA-fixed paraffin-embedded sections)

Immunoperoxidase of monoclonal antibody to SNAP23 on formalin-fixed paraffin-embedded human spleen. [antibody concentration 3 ug/ml]

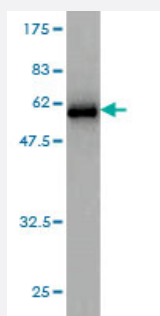
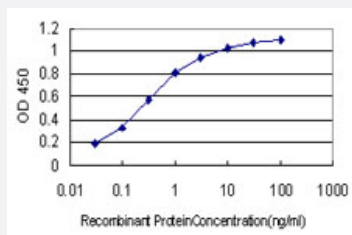


### Immunoprecipitation

Immunoprecipitation of SNAP23 transfected lysate using anti-SNAP23 monoclonal antibody and Protein A Magnetic Bead, and immunoblotted with SNAP23 MaxPab rabbit polyclonal antibody.

## Sandwich ELISA (Recombinant protein)

Detection limit for recombinant GST tagged SNAP23 is approximately 0.03ng/ml as a capture antibody.



Western Blot detection against Immunogen (48.95 KDa) .

## Specification

<b>Product Description</b>	Mouse monoclonal antibody raised against a full length recombinant SNAP23.
<b>Immunogen</b>	SNAP23 (AAH00148, 1 a.a. ~ 211 a.a) full-length recombinant protein with GST tag. MW of the GST tag alone is 26 KDa.
<b>Sequence</b>	MDNLSSEEIQQRAHQITDESLESTRRLGLAIESQDAGTKTITMLDEQKEQLNRIEEGLDQINKDMRE TEKTLTELNKCCGLCVCPCNRTKNFESGKAYKTTWGDGGENSPCNVVSKQPGPVTNGQLQQPT TGAASGGYIKRITNDAREDEMEENLTQVGSILGNLKDMALNIGNEIDAQNPQIKRITDKADTNRDRIDI ANARAKKLIDS
<b>Host</b>	Mouse
<b>Reactivity</b>	Human
<b>Interspecies Antigen Sequence</b>	Mouse (82); Rat (87)
<b>Isotype</b>	IgG1 Kappa
<b>Quality Control Testing</b>	Antibody Reactive Against Recombinant Protein. Western Blot detection against Immunogen (48.95 KDa) .
<b>Storage Buffer</b>	In 1x PBS, pH 7.4
<b>Storage Instruction</b>	Store at -20°C or lower. Aliquot to avoid repeated freezing and thawing.

## Applications

- Western Blot (Transfected lysate)

Western Blot analysis of SNAP23 expression in transfected 293T cell line by SNAP23 monoclonal antibody (M01), clone 2F5-3D4.

Lane 1: SNAP23 transfected lysate (Predicted MW: 23.4 KDa).

Lane 2: Non-transfected lysate.

[Protocol Download](#)

- Western Blot (Recombinant protein)

[Protocol Download](#)

- Immunohistochemistry (Formalin/PFA-fixed paraffin-embedded sections)

Immunoperoxidase of monoclonal antibody to SNAP23 on formalin-fixed paraffin-embedded human spleen. [antibody concentration 3 ug/ml]

[Protocol Download](#)

- Immunoprecipitation

Immunoprecipitation of SNAP23 transfected lysate using anti-SNAP23 monoclonal antibody and Protein A Magnetic Bead, and immunoblotted with SNAP23 MaxPab rabbit polyclonal antibody.

[Protocol Download](#)

- Sandwich ELISA (Recombinant protein)

Detection limit for recombinant GST tagged SNAP23 is approximately 0.03ng/ml as a capture antibody.

[Protocol Download](#)

- ELISA

## Gene Info — SNAP23

Entrez GeneID	<a href="#">8773</a>
---------------	----------------------

GeneBank Accession#	<a href="#">BC000148</a>
---------------------	--------------------------

Protein Accession#	<a href="#">AAH00148</a>
--------------------	--------------------------

Gene Name	SNAP23
-----------	--------

Gene Alias	HsT17016, SNAP23A, SNAP23B
Gene Description	synaptosomal-associated protein, 23kDa
Omim ID	<a href="#">602534</a>
Gene Ontology	<a href="#">Hyperlink</a>
Gene Summary	<p>Specificity of vesicular transport is regulated, in part, by the interaction of a vesicle-associated membrane protein termed synaptobrevin/VAMP with a target compartment membrane protein termed syntaxin. These proteins, together with SNAP25 (synaptosome-associated protein of 25 kDa), form a complex which serves as a binding site for the general membrane fusion machinery. Synaptobrevin/VAMP and syntaxin are believed to be involved in vesicular transport in most, if not all cells, while SNAP25 is present almost exclusively in the brain, suggesting that a ubiquitously expressed homolog of SNAP25 exists to facilitate transport vesicle/target membrane fusion in other tissues. The protein encoded by this gene is structurally and functionally similar to SNAP25 and binds tightly to multiple syntaxins and synaptobrevins/VAMPs. It is an essential component of the high affinity receptor for the general membrane fusion machinery and is an important regulator of transport vesicle docking and fusion. Two alternative transcript variants encoding different protein isoforms have been described for this gene. [provided by RefSeq]</p>
Other Designations	OTTHUMP00000161263 synaptosomal-associated protein 23

## Pathway

- [SNARE interactions in vesicular transport](#)

## Disease

- [Diabetes Mellitus](#)
- [Genetic Predisposition to Disease](#)
- [Mental Disorders](#)