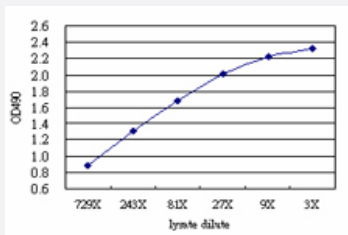


RIPK2 (Human) Matched Antibody Pair

Catalog # H00008767-AP51 Size 1 Set

Applications



Sandwich ELISA detection sensitivity ranging from approximately 729x to 3x dilution of the RIPK2 293T overexpression lysate (non-denatured).

Specification

Product Description	This antibody pair set comes with a matched antibody pair to detect and quantify the protein level of human RIPK2.
Reactivity	Human
Interspecies Antigen Sequence	Mouse (84); Rat (85)
Quality Control Testing	Standard curve using RIPK2 293T overexpression lysate (non-denatured) as an analyte. Sandwich ELISA detection sensitivity ranging from approximately 729x to 3x dilution of the RIPK2 293T overexpression lysate (non-denatured).
Supplied Product	Antibody pair set content: 1. Capture antibody: mouse monoclonal anti-RIPK2 (100 ug) 2. Detection antibody: rabbit purified polyclonal anti-RIPK2 (50 ug) *Reagents are sufficient for at least 3-5 x 96 well plates using recommended protocols.
Storage Instruction	Store reagents of the antibody pair set at -20°C or lower. Please aliquot to avoid repeated freeze thaw cycle. Reagents should be returned to -20°C storage immediately after use.

Applications

- ELISA Pair (Transfected lysate)

[Protocol Download](#)

Gene Info — RIPK2

Entrez GeneID [8767](#)

Gene Name RIPK2

Gene Alias CARD3, CARDIAK, CCK, GIG30, RICK, RIP2

Gene Description receptor-interacting serine-threonine kinase 2

Omim ID [603455](#)

Gene Ontology [Hyperlink](#)

Gene Summary This gene encodes a member of the receptor-interacting protein (RIP) family of serine/threonine protein kinases. The encoded protein contains a C-terminal caspase activation and recruitment domain (CARD), and is a component of signaling complexes in both the innate and adaptive immune pathways. It is a potent activator of NF-kappaB and inducer of apoptosis in response to various stimuli. [provided by RefSeq]

Other Designations CARD-carrying kinase|CARD-containing interleukin-1 beta-converting enzyme (ICE)-associated kinase|growth-inhibiting gene 30|receptor interacting protein 2|receptor-interacting protein (RIP)-like interacting caspase-like apoptosis regulatory protein (CLARP

Pathway

- [Neurotrophin signaling pathway](#)

Disease

- [Genetic Predisposition to Disease](#)
- [Hematologic Diseases](#)
- [Hodgkin Disease](#)
- [Leprosy](#)
- [Lymphoma](#)

- [Lymphoproliferative Disorders](#)
- [Occupational Diseases](#)
- [Waldenstrom Macroglobulinemia](#)
- [Werner syndrome](#)