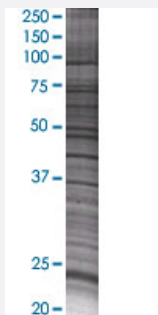


# RAB11A 293T Cell Transient Overexpression Lysate(Denatured)

Catalog # H00008766-T01

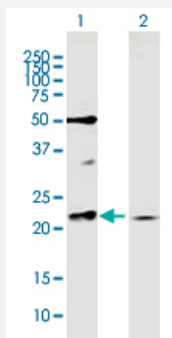
Size 100 uL

## Applications



### SDS-PAGE Gel

RAB11A transfected lysate.



### Western Blot

Lane 1: RAB11A transfected lysate ( 24.4 KDa)

Lane 2: Non-transfected lysate.

## Specification

**Transfected Cell Line** 293T

**Plasmid** pCMV-RAB11A full-length

**Host** Human

**Theoretical MW (kDa)** 24.4

**Quality Control Testing** Transient overexpression cell lysate was tested with Anti-RAB11A antibody ([H00008766-B01P](#)) by Western Blots.

SDS-PAGE Gel  
RAB11A transfected lysate.

Western Blot  
Lane 1: RAB11A transfected lysate ( 24.4 KDa)  
Lane 2: Non-transfected lysate.

Storage Buffer	1X Sample Buffer (50 mM Tris-HCl, 2% SDS, 10% glycerol, 300 mM 2-mercaptoethanol, 0.01% Bromophenol blue)
Storage Instruction	Store at -80°C. Aliquot to avoid repeated freezing and thawing.

## Applications

- Western Blot

## Gene Info — RAB11A

Entrez GeneID	<a href="#">8766</a>
GeneBank Accession#	<a href="#">NM_004663</a>
Protein Accession#	<a href="#">NP_004654.1</a>
Gene Name	RAB11A
Gene Alias	MGC1490, YL8
Gene Description	RAB11A, member RAS oncogene family
Omim ID	<a href="#">605570</a>
Gene Ontology	<a href="#">Hyperlink</a>
Gene Summary	The protein encoded by this gene belongs to the small GTPase superfamily, Rab family. It is associated with both constitutive and regulated secretory pathways, and may be involved in protein transport. [provided by RefSeq]
Other Designations	RAB 11A, member oncogene family Ras-related protein Rab-11A

## Pathway

- [Endocytosis](#)