

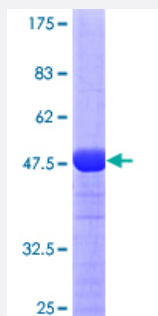
Full-Length

RAB11A (Human) Recombinant Protein (P01)

Catalog # H00008766-P01

Size 25 ug, 10 ug

Applications



Specification

Product Description

Human RAB11A full-length ORF (AAH13348.1, 1 a.a. - 216 a.a.) recombinant protein with GST-tag at N-terminal.

Sequence

MGTRDDEYDYLKVVLLIGDSGVGKSNLLSRFTRNEFNLESKSTIGVEFATRSIQVDGKTIKAQIWD
AGQERYRAITSAYRGAVGALLVYDIAKHLTYENVERWLKELRDHADSNNVIMLVGNKSDLRHLRAV
PTDEARAFAEKNGLSFIETSALDSTNVEAAFQTILTEYRVSQKQMSDRRENDMSPSNNVPIHVP
PTTENKPKVQCCQNI

Host

Wheat Germ (in vitro)

Theoretical MW (kDa)

49.5

Preparation Method

[in vitro wheat germ expression system](#)

Purification

Glutathione Sepharose 4 Fast Flow

Quality Control Testing

12.5% SDS-PAGE Stained with Coomassie Blue.

Storage Buffer

50 mM Tris-HCl, 10 mM reduced Glutathione, pH=8.0 in the elution buffer.

Storage Instruction

Store at -80°C. Aliquot to avoid repeated freezing and thawing.

Note

Best use within three months from the date of receipt of this protein.

Applications

- Enzyme-linked Immunoabsorbent Assay
- Western Blot (Recombinant protein)
- Antibody Production
- Protein Array

Gene Info — RAB11A

Entrez GeneID	8766
GeneBank Accession#	BC013348
Protein Accession#	AAH13348.1
Gene Name	RAB11A
Gene Alias	MGC1490, YL8
Gene Description	RAB11A, member RAS oncogene family
Omim ID	605570
Gene Ontology	Hyperlink
Gene Summary	The protein encoded by this gene belongs to the small GTPase superfamily, Rab family. It is associated with both constitutive and regulated secretory pathways, and may be involved in protein transport. [provided by RefSeq]
Other Designations	RAB 11A, member oncogene family Ras-related protein Rab-11A

Pathway

- [Endocytosis](#)