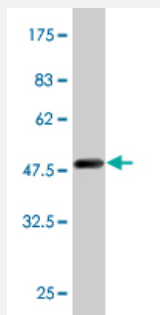


RAB11A monoclonal antibody (M07), clone S1

Catalog # H00008766-M07

Size 100 ug

Applications



Western Blot detection against Immunogen (49.5 KDa) .

Specification

Product Description	Mouse monoclonal antibody raised against a full-length recombinant RAB11A.
Immunogen	RAB11A (AAH13348.1, 1 a.a. ~ 216 a.a) full-length recombinant protein with GST tag. MW of the GST tag alone is 26 KDa.
Sequence	MGTRDDEYDYLKVVLLIGDSGVGKSNLLSRFTRNEFNLESKSTIGVEFATRSIQVDGKTIKAQIWDT AGQERYRAITSAYYRGAVGALLVYDIAKHLTYENVERWLKELRDHADSNVIMLVGNKSDLRHLRAV PTDEARAF AEKNGLSFIETSALDSTNVEAAFQTILTEYRIVSQKQMSDRRENDMSPSNNVPIHVP PTTENKPKVQCCQNI
Host	Mouse
Reactivity	Human
Isotype	IgG1 Kappa
Quality Control Testing	Antibody Reactive Against Recombinant Protein. Western Blot detection against Immunogen (49.5 KDa) .
Storage Buffer	In 1x PBS, pH 7.4
Storage Instruction	Store at -20°C or lower. Aliquot to avoid repeated freezing and thawing.

Applications

- Western Blot (Recombinant protein)

[Protocol Download](#)

- ELISA

Gene Info — RAB11A

Entrez GeneID	8766
GeneBank Accession#	BC013348
Protein Accession#	AAH13348.1
Gene Name	RAB11A
Gene Alias	MGC1490, YL8
Gene Description	RAB11A, member RAS oncogene family
Omim ID	605570
Gene Ontology	Hyperlink
Gene Summary	The protein encoded by this gene belongs to the small GTPase superfamily, Rab family. It is associated with both constitutive and regulated secretory pathways, and may be involved in protein transport. [provided by RefSeq]
Other Designations	RAB 11A, member oncogene family Ras-related protein Rab-11A

Pathway

- [Endocytosis](#)