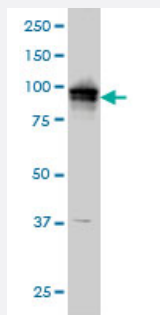


# ADAM9 monoclonal antibody (M01), clone 3E6

Catalog # H00008754-M01

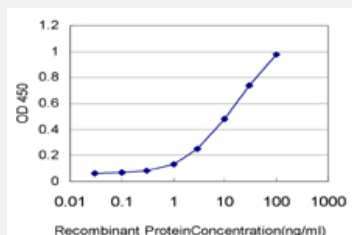
Size 100 ug

## Applications



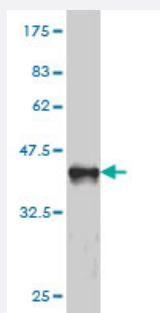
### Western Blot (Cell lysate)

ADAM9 monoclonal antibody (M01), clone 3E6 Western Blot analysis of ADAM9 expression in A-431 ( Cat # L015V1 ).



### Sandwich ELISA (Recombinant protein)

Detection limit for recombinant GST tagged ADAM9 is approximately 0.3ng/ml as a capture antibody.



Western Blot detection against Immunogen (36.74 kDa) .

## Specification

### Product Description

Mouse monoclonal antibody raised against a partial recombinant ADAM9.

<b>Immunogen</b>	ADAM9 (NP_003807, 36 a.a. ~ 135 a.a) partial recombinant protein with GST tag. MW of the GST tag alone is 26 KDa.
<b>Sequence</b>	QTSHLSSYEIITPWRLTRERREAPRPYSKQVSIVIAEGKEHIIHLERNKDLLPEDFVVYTYNKEGTLI TDHPNIQNHCHYRGYVEGVHNSSIALSDCFG
<b>Host</b>	Mouse
<b>Reactivity</b>	Human
<b>Interspecies Antigen Sequence</b>	Mouse (79); Rat (78)
<b>Isotype</b>	IgG1 Kappa
<b>Quality Control Testing</b>	Antibody Reactive Against Recombinant Protein. Western Blot detection against Immunogen (36.74 KDa) .
<b>Storage Buffer</b>	In 1x PBS, pH 7.4
<b>Storage Instruction</b>	Store at -20°C or lower. Aliquot to avoid repeated freezing and thawing.

## Applications

- Western Blot (Cell lysate)

ADAM9 monoclonal antibody (M01), clone 3E6 Western Blot analysis of ADAM9 expression in A-431 ( Cat # L015V1 ).

[Protocol Download](#)

- Western Blot (Recombinant protein)

[Protocol Download](#)

- Sandwich ELISA (Recombinant protein)

Detection limit for recombinant GST tagged ADAM9 is approximately 0.3ng/ml as a capture antibody.

[Protocol Download](#)

- ELISA

## Gene Info — ADAM9

Entrez GeneID [8754](#)

GeneBank Accession#	<a href="#">NM_003816</a>
Protein Accession#	<a href="#">NP_003807</a>
Gene Name	ADAM9
Gene Alias	KIAA0021, MCMP, MDC9, Mltng
Gene Description	ADAM metallopeptidase domain 9 (meltrin gamma)
Omim ID	<a href="#">602713</a>
Gene Ontology	<a href="#">Hyperlink</a>
Gene Summary	<p>This gene encodes a member of the ADAM (a disintegrin and metalloprotease domain) family. Members of this family are membrane-anchored proteins structurally related to snake venom disintegrins, and have been implicated in a variety of biological processes involving cell-cell and cell-matrix interactions, including fertilization, muscle development, and neurogenesis. The protein encoded by this gene interacts with SH3 domain-containing proteins, binds mitotic arrest deficient 2 beta protein, and is also involved in TPA-induced ectodomain shedding of membrane-anchored heparin-binding EGF-like growth factor. Two alternative splice variants have been identified, encoding distinct isoforms. [provided by RefSeq]</p>
Other Designations	ADAM metallopeptidase domain 9 a disintegrin and metalloproteinase domain 9 (meltrin gamma) cellular disintegrin-related protein meltrin gamma myeloma cell metalloproteinase

## Disease

- [Alzheimer disease](#)