

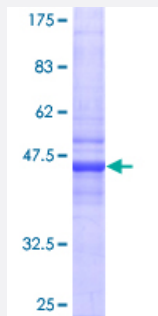
Full-Length

CRADD (Human) Recombinant Protein (P02)

Catalog # H00008738-P02

Size 25 ug, 10 ug

Applications



Specification

Product Description	Human CRADD full-length ORF (AAH17042, 1 a.a. - 199 a.a.) recombinant protein with GST-tag at N-terminal.
Sequence	MEARDKQVLRSLRLELGAEVLVEGLVLQYLYQEGILTENHIQEINAQTTGLRKTMLLLDILPSRGPKA FDTFDLSLQEFPPWREKLKKAREEAMTDLPGDRLTGIPSHLNSSPSDRQINQLAQRLGPEWEP MVPSLGLSQTDIYRCKANHPHNVQSQVVEAFIRWRQRFQKQATFQSLHNGLRAVEVDPSSLHML LE
Host	Wheat Germ (in vitro)
Theoretical MW (kDa)	47.63
Interspecies Antigen Sequence	Mouse (89)
Preparation Method	in vitro wheat germ expression system
Purification	Glutathione Sepharose 4 Fast Flow
Quality Control Testing	12.5% SDS-PAGE Stained with Coomassie Blue.
Storage Buffer	50 mM Tris-HCl, 10 mM reduced Glutathione, pH=8.0 in the elution buffer.
Storage Instruction	Store at -80°C. Aliquot to avoid repeated freezing and thawing.

Note

Best use within three months from the date of receipt of this protein.

Applications

- Enzyme-linked Immunoabsorbent Assay
- Western Blot (Recombinant protein)
- Antibody Production
- Protein Array

Gene Info — CRADD

Entrez GeneID [8738](#)

GeneBank Accession# [BC017042](#)

Protein Accession# [AAH17042](#)

Gene Name CRADD

Gene Alias MGC9163, RAIDD

Gene Description CASP2 and RIPK1 domain containing adaptor with death domain

Omim ID [603454](#)

Gene Ontology [Hyperlink](#)

Gene Summary The protein encoded by this gene is a death domain (CARD/DD)-containing protein and has been shown to induce cell apoptosis. Through its CARD domain, this protein interacts with, and thus recruits, caspase 2/ICH1 to the cell death signal transduction complex that includes tumor necrosis factor receptor 1 (TNFR1A), RIPK1/RIP kinase, and numbers of other CARD domain-containing proteins. [provided by RefSeq]

Other Designations RIP-associated ICH1/CED3-homologous protein with death domain|RIP-associated protein with a death domain|caspase and RIP adaptor with death domain|death adaptor molecule RAIDD|death domain containing protein CRADD

Disease

- [Diabetes Mellitus](#)
- [Genetic Predisposition to Disease](#)
- [Narcolepsy](#)