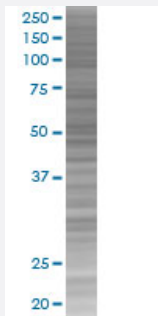


EED 293T Cell Transient Overexpression Lysate(Denatured)

Catalog # H00008726-T01

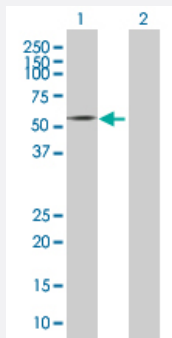
Size 100 uL

Applications



SDS-PAGE Gel

EED transfected lysate.



Western Blot

Lane 1: EED transfected lysate (50.2 KDa)

Lane 2: Non-transfected lysate.

Specification

Transfected Cell Line 293T

Plasmid pCMV-EED full-length

Host Human

Theoretical MW (kDa) 50.2

Quality Control Testing Transient overexpression cell lysate was tested with Anti-EED antibody ([H00008726-B01](#)) by Western Blots.
 SDS-PAGE Gel
 EED transfected lysate.
 Western Blot
 Lane 1: EED transfected lysate (50.2 KDa)
 Lane 2: Non-transfected lysate.

Storage Buffer

1X Sample Buffer (50 mM Tris-HCl, 2% SDS, 10% glycerol, 300 mM 2-mercaptoethanol, 0.01% Bromophenol blue)

Storage Instruction

Store at -80°C. Aliquot to avoid repeated freezing and thawing.

Applications

- Western Blot

Gene Info — EED

Entrez GeneID[8726](#)**GeneBank Accession#**[NM_003797.2](#)**Protein Accession#**[-](#)**Gene Name**

EED

Gene Alias

HEED, WAIT1

Gene Description

embryonic ectoderm development

Omim ID[605984](#)**Gene Ontology**[Hyperlink](#)**Gene Summary**

This gene encodes a member of the Polycomb-group (PcG) family. PcG family members form multimeric protein complexes, which are involved in maintaining the transcriptional repressive state of genes over successive cell generations. This protein interacts with enhancer of zeste 2, the cytoplasmic tail of integrin beta7, immunodeficiency virus type 1 (HIV-1) MA protein, and histone deacetylase proteins. This protein mediates repression of gene activity through histone deacetylation, and may act as a specific regulator of integrin function. Two transcript variants encoding distinct isoforms have been identified for this gene. [provided by RefSeq]

Other Designations

WD protein associating with integrin cytoplasmic tails 1