

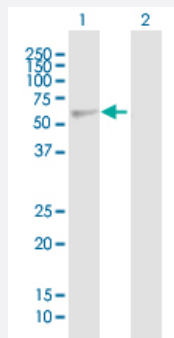
MaxPab®

EED purified MaxPab mouse polyclonal antibody (B01P)

Catalog # H00008726-B01P

Size 50 ug

Applications

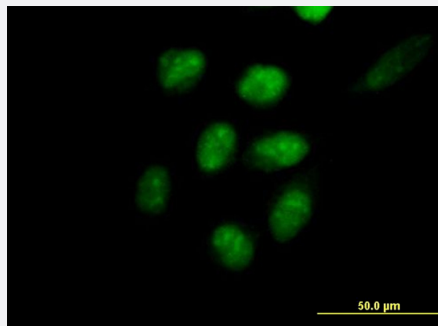


Western Blot (Transfected lysate)

Western Blot analysis of EED expression in transfected 293T cell line ([H00008726-T01](#)) by EED MaxPab polyclonal antibody.

Lane 1: EED transfected lysate(48.51 KDa).

Lane 2: Non-transfected lysate.



Immunofluorescence

Immunofluorescence of purified MaxPab antibody to EED on HeLa cell. [antibody concentration 10 ug/ml]

Specification

Product Description

Mouse polyclonal antibody raised against a full-length human EED protein.

Immunogen

EED (NP_003788.2, 1 a.a. ~ 441 a.a) full-length human protein.

Sequence

MSEREVSTAPAGTDMPPAAKKQKLSSDENSNDLSGDENDDAVSIESGTNTERPDTPNTNPAP
GRKSWGKGGKWKSKKCKYSFKCVNSLKEDHNQPLFGVQFNWHSKEGDPLVFATVGSNRVTLYE
CHSQGEIRLLQSYVDADADENFYTCAWTYDSNTSHPLLAVAGSRGIIRINPITMQCIKHVYVGHGNAIN
ELKFHPRDPNLLLSVSKDHALRLWNIQDTLVAIFGGVEGHRDEVLSADYDLLGEKIMSCGMDHS
LKLWRINSKRMMNAIKESYDYNPNKTNRPFISQKIHFDPDFSTRDIHRNYDCVRWLGDLLSKSCEN
AIVCWKPGKMEDDIDKIKPSESNVTILGRFDYSQCDWYMRFSMDFWQKMLALGNQVGKLYVWD
LEVEDPHKAKCTTLTHHKCGAAIRQTSFSRDSSILIAVCDDASIRWDRRLR

Host	Mouse
Reactivity	Human
Quality Control Testing	Antibody reactive against mammalian transfected lysate.
Storage Buffer	In 1x PBS, pH 7.4
Storage Instruction	Store at -20°C or lower. Aliquot to avoid repeated freezing and thawing.

Applications

- Western Blot (Transfected lysate)

Western Blot analysis of EED expression in transfected 293T cell line ([H00008726-T01](#)) by EED MaxPab polyclonal antibody.

Lane 1: EED transfected lysate(48.51 KDa).

Lane 2: Non-transfected lysate.

[Protocol Download](#)

- Immunofluorescence

Immunofluorescence of purified MaxPab antibody to EED on HeLa cell. [antibody concentration 10 ug/ml]

Gene Info — EED

Entrez GeneID	8726
GeneBank Accession#	NM_003797.2
Protein Accession#	NP_003788.2
Gene Name	EED
Gene Alias	HEED, WAIT1
Gene Description	embryonic ectoderm development
Omim ID	605984
Gene Ontology	Hyperlink

Gene Summary

This gene encodes a member of the Polycomb-group (PcG) family. PcG family members form multimeric protein complexes, which are involved in maintaining the transcriptional repressive state of genes over successive cell generations. This protein interacts with enhancer of zeste 2, the cytoplasmic tail of integrin beta7, immunodeficiency virus type 1 (HIV-1) MA protein, and histone deacetylase proteins. This protein mediates repression of gene activity through histone deacetylation, and may act as a specific regulator of integrin function. Two transcript variants encoding distinct isoforms have been identified for this gene. [provided by RefSeq]

Other Designations

WD protein associating with integrin cytoplasmic tails 1