

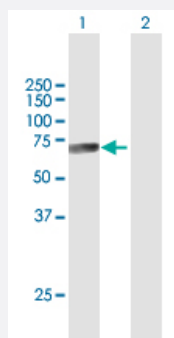
MaxPab®

CTSF purified MaxPab mouse polyclonal antibody (B01P)

Catalog # H00008722-B01P

Size 50 ug

Applications



Western Blot (Transfected lysate)

Western Blot analysis of CTSF expression in transfected 293T cell line ([H00008722-T01](#)) by CTSF MaxPab polyclonal antibody.

Lane 1: CTSF transfected lysate(53.24 KDa).

Lane 2: Non-transfected lysate.

Specification

Product Description

Mouse polyclonal antibody raised against a full-length human CTSF protein.

Immunogen

CTSF (NP_003784.2, 1 a.a. ~ 484 a.a) full-length human protein.

Sequence

MAPWLQLLSLLGLLPGAVAAPAQPRAASFQAWGPPSPELLAPTRFALEMFNRGRAAGTRAVLG
LVRGRVRRAGQGSLSLEATLEPPCNDPMVCRLPVSKTLLCSFQVLDELGRHVLLRKDCGPV
DTKVPGAGEPKSAFTQGSAMISLSQNHDPNRNETFSSVISLLNEDPLSQDLPVKMASIFKNFVIT
YNRTYESKEEARWRLSVFVNNMVRQAQIQALDRGTAQYGVTKFSDLTEEEFRTIYLNLLRKEPGN
KMKQAKSVGDLAPPEWDWRSGAVTKVKDQGMCGSCWAFSVTGNVEGWFLNQGTLLSLSE
QELLDCDKMDKACMGGLPSNAYSIAKNLGGLETDDYSYQGHMQSCNFSAEKAKVYINDSVELS
QNEQKLAAWLAKRGPISVAINAFGMQFYRHGISRPLRPLCSPWLIDHAVLLVGYNRSDVPFWAIK
NSWGTDWGEKGYYYLHRGSGACGVNTMASSAVVD

Host

Mouse

Reactivity

Human

Interspecies Antigen Sequence

Mouse (75); Rat (74)

Quality Control Testing

Antibody reactive against mammalian transfected lysate.

Storage Buffer

In 1x PBS, pH 7.4

Storage Instruction

Store at -20°C or lower. Aliquot to avoid repeated freezing and thawing.

Applications

- Western Blot (Transfected lysate)

Western Blot analysis of CTSF expression in transfected 293T cell line ([H00008722-T01](#)) by CTSF MaxPab polyclonal antibody.

Lane 1: CTSF transfected lysate(53.24 KDa).

Lane 2: Non-transfected lysate.

[Protocol Download](#)

Gene Info — CTSF

Entrez GeneID
[8722](#)
GeneBank Accession#
[NM_003793](#)
Protein Accession#
[NP_003784.2](#)
Gene Name

CTSF

Gene Alias

CATSF

Gene Description

cathepsin F

Omim ID
[603539](#)
Gene Ontology
[Hyperlink](#)
Gene Summary

Cathepsins are papain family cysteine proteinases that represent a major component of the lysosomal proteolytic system. Cathepsins generally contain a signal sequence, followed by a propeptide and then a catalytically active mature region. The very long (251 amino acid residues) proregion of the cathepsin F precursor contains a C-terminal domain similar to the pro-segment of cathepsin L-like enzymes, a 50-residue flexible linker peptide, and an N-terminal domain predicted to adopt a cystatin-like fold. The cathepsin F proregion is unique within the papain family cysteine proteases in that it contains this additional N-terminal segment predicted to share structural similarities with cysteine protease inhibitors of the cystatin superfamily. This cystatin-like domain contains some of the elements known to be important for inhibitory activity. CTSF encodes a predicted protein of 484 amino acids which contains a 19 residue signal peptide. Cathepsin F contains five potential N-glycosylation sites, and it may be targeted to the endosomal/lysosomal compartment via the mannose 6-phosphate receptor pathway. The cathepsin F gene is ubiquitously expressed, and it maps to chromosome 11q13, close to the gene encoding cathepsin W. [provided by RefSeq]

Other Designations

-

Pathway

- [Lysosome](#)

Disease

- [Cardiovascular Diseases](#)
- [Diabetes Mellitus](#)
- [Edema](#)