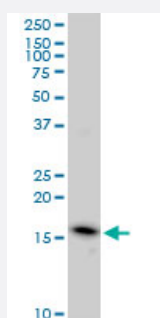


EDF1 monoclonal antibody (M03), clone 3E6

Catalog # H00008721-M03

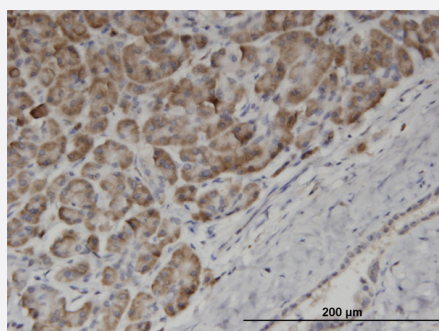
Size 100 ug

Applications



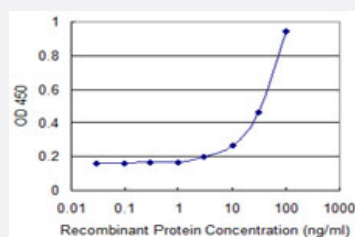
Western Blot (Cell lysate)

EDF1 monoclonal antibody (M03), clone 3E6. Western Blot analysis of EDF1 expression in HeLa S3 NE (Cat # L013V3).



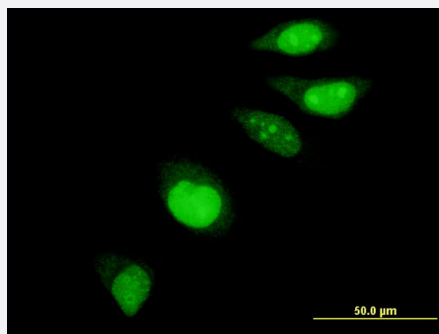
Immunohistochemistry (Formalin/PFA-fixed paraffin-embedded sections)

Immunoperoxidase of monoclonal antibody to EDF1 on formalin-fixed paraffin-embedded human pancreas. [antibody concentration 3 ug/ml]



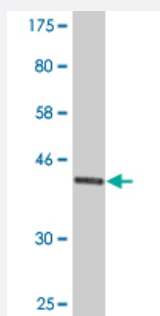
Sandwich ELISA (Recombinant protein)

Detection limit for recombinant GST tagged EDF1 is 1 ng/ml as a capture antibody.



Immunofluorescence

Immunofluorescence of monoclonal antibody to EDF1 on HeLa cell . [antibody concentration 10 ug/ml]



Western Blot detection against Immunogen (42.02 KDa) .

Specification

| | |
|--------------------------------------|--|
| Product Description | Mouse monoclonal antibody raised against a full-length recombinant EDF1. |
| Immunogen | EDF1 (AAH15500.1, 1 a.a. ~ 148 a.a) full-length recombinant protein with GST tag. MW of the GST tag alone is 26 KDa. |
| Sequence | MAESDWDTVTVLRKKGPATAAKSKQAILAAQSRGEDVETSKKWAAGQNKQHSITKNTAKLDRE TEELHHDRVTLEVGVQGRQSKGLTQKDLATKINEKPQVIADYESGRAIPNNQVLGKIERAIGLKL RGKDIGKPIEKGPRAK |
| Host | Mouse |
| Reactivity | Human |
| Interspecies Antigen Sequence | Mouse (98); Rat (98) |
| Isotype | IgG2a Kappa |
| Quality Control Testing | Antibody Reactive Against Recombinant Protein. Western Blot detection against Immunogen (42.02 KDa) . |
| Storage Buffer | In 1x PBS, pH 7.4 |
| Storage Instruction | Store at -20°C or lower. Aliquot to avoid repeated freezing and thawing. |

Applications

- Western Blot (Cell lysate)

EDF1 monoclonal antibody (M03), clone 3E6. Western Blot analysis of EDF1 expression in Hela S3 NE(Cat # L013V3).

[Protocol Download](#)

- Western Blot (Recombinant protein)

[Protocol Download](#)

- Immunohistochemistry (Formalin/PFA-fixed paraffin-embedded sections)

Immunoperoxidase of monoclonal antibody to EDF1 on formalin-fixed paraffin-embedded human pancreas. [antibody concentration 3 ug/ml]

[Protocol Download](#)

- Sandwich ELISA (Recombinant protein)

Detection limit for recombinant GST tagged EDF1 is 1 ng/ml as a capture antibody.

[Protocol Download](#)

- ELISA

- Immunofluorescence

Immunofluorescence of monoclonal antibody to EDF1 on HeLa cell . [antibody concentration 10 ug/ml]

Gene Info — EDF1

Entrez GeneID [8721](#)

GeneBank Accession# [BC015500](#)

Protein Accession# [AAH15500.1](#)

Gene Name EDF1

Gene Alias EDF-1, MBF1, MGC9058

Gene Description endothelial differentiation-related factor 1

Omim ID [605107](#)

Gene Ontology [Hyperlink](#)

Gene Summary

This gene encodes a protein that may regulate endothelial cell differentiation. It has been postulated that the protein functions as a bridging molecule that interconnects regulatory proteins and the basal transcriptional machinery, thereby modulating the transcription of genes involved in endothelial differentiation. This protein has also been found to act as a transcriptional coactivator by interconnecting the general transcription factor TATA element-binding protein (TBP) and gene-specific activators. Two alternatively spliced transcripts which encode distinct proteins have been found for this gene. [provided by RefSeq]

Other Designations

OTTHUMP00000022616|OTTHUMP00000022617|multiprotein bridging factor 1|multiprotein bridging factor-1