

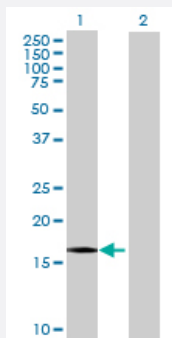
MaxPab®

EDF1 MaxPab mouse polyclonal antibody (B02)

Catalog # H00008721-B02

Size 50 uL

Applications

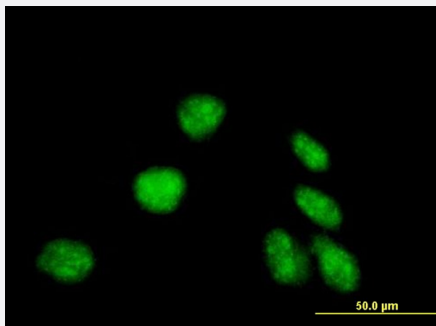


Western Blot (Transfected lysate)

Western Blot analysis of EDF1 expression in transfected 293T cell line ([H00008721-T02](#)) by EDF1 MaxPab polyclonal antibody.

Lane 1: EDF1 transfected lysate(16.28 KDa).

Lane 2: Non-transfected lysate.



Immunofluorescence

Immunofluorescence of purified MaxPab antibody to EDF1 on HeLa cell. [antibody concentration 10 ug/ml]

Specification

Product Description	Mouse polyclonal antibody raised against a full-length human EDF1 protein.
Immunogen	EDF1 (NP_003783.1, 1 a.a. ~ 148 a.a) full-length human protein.
Sequence	MAESDWDTVTVLRKKGPTAAQAKSKQAILAAQRRGEDVETSKKWAAGQNKQHSITKNTAKLDRE TEELHHDRVLTLEVGVKVIQQGRQSKGLTQKDLATKINEKPQVIADYESGRAIPNNQVLGKIERAIGLKL RGKDIGKPIEKGPRAK
Host	Mouse
Reactivity	Human

Interspecies Antigen Sequence	Mouse (99); Rat (99)
Quality Control Testing	Antibody reactive against mammalian transfected lysate.
Storage Buffer	No additive
Storage Instruction	Store at -20°C or lower. Aliquot to avoid repeated freezing and thawing.
Note	For IHC and IF applications, antibody purification with Protein A will be needed prior to use.

Applications

- Western Blot (Transfected lysate)

Western Blot analysis of EDF1 expression in transfected 293T cell line ([H00008721-T02](#)) by EDF1 MaxPab polyclonal antibody.

Lane 1: EDF1 transfected lysate(16.28 KDa).

Lane 2: Non-transfected lysate.

[Protocol Download](#)

- Immunofluorescence

Immunofluorescence of purified MaxPab antibody to EDF1 on HeLa cell. [antibody concentration 10 ug/ml]

Gene Info — EDF1

Entrez GeneID	8721
GeneBank Accession#	NM_003792.2
Protein Accession#	NP_003783.1
Gene Name	EDF1
Gene Alias	EDF-1, MBF1, MGC9058
Gene Description	endothelial differentiation-related factor 1
Omim ID	605107
Gene Ontology	Hyperlink

Gene Summary

This gene encodes a protein that may regulate endothelial cell differentiation. It has been postulated that the protein functions as a bridging molecule that interconnects regulatory proteins and the basal transcriptional machinery, thereby modulating the transcription of genes involved in endothelial differentiation. This protein has also been found to act as a transcriptional coactivator by interconnecting the general transcription factor TATA element-binding protein (TBP) and gene-specific activators. Two alternatively spliced transcripts which encode distinct proteins have been found for this gene. [provided by RefSeq]

Other Designations

OTTHUMP00000022616|OTTHUMP00000022617|multiprotein bridging factor 1|multiprotein bridging factor-1