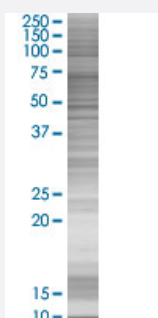


# PAGE1 293T Cell Transient Overexpression Lysate(Denatured)

Catalog # H00008712-T01

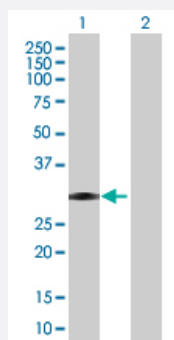
Size 100 uL

## Applications



### SDS-PAGE Gel

PAGE1 transfected lysate.



### Western Blot

Lane 1: PAGE1 transfected lysate ( 16.17 KDa)

Lane 2: Non-transfected lysate.

## Specification

**Transfected Cell Line** 293T

**Plasmid** pCMV-PAGE1 full-length

**Host** Human

**Theoretical MW (kDa)** 16.17

**Quality Control Testing** Transient overexpression cell lysate was tested with Anti-PAGE1 antibody ([H00008712-B01](#)) by Western Blots.  
 SDS-PAGE Gel  
 PAGE1 transfected lysate.  
 Western Blot  
 Lane 1: PAGE1 transfected lysate ( 16.17 KDa)  
 Lane 2: Non-transfected lysate.

**Storage Buffer**

1X Sample Buffer (50 mM Tris-HCl, 2% SDS, 10% glycerol, 300 mM 2-mercaptoethanol, 0.01% Bromophenol blue)

**Storage Instruction**

Store at -80°C. Aliquot to avoid repeated freezing and thawing.

## Applications

- Western Blot

## Gene Info — PAGE1

**Entrez GeneID**[8712](#)**GeneBank Accession#**[NM\\_003785.3](#)**Protein Accession#**[-](#)**Gene Name**

PAGE1

**Gene Alias**

GAGE-9, GAGEB1, PAGE-1

**Gene Description**

P antigen family, member 1 (prostate associated)

**Omim ID**[300288](#)**Gene Ontology**[Hyperlink](#)**Gene Summary**

This gene belongs to a family of genes that are expressed in a variety of tumors but not in normal tissues, except for the testis. Unlike the other gene family members, this gene does not encode an antigenic peptide. Nothing is presently known about the function of this protein. [provided by RefSeq]

**Other Designations**

G antigen, family B, 1 (prostate associated)|OTTHUMP00000032034|P antigen family, member 1  
|prostate associated gene 1