

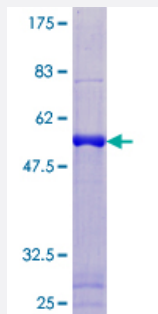
Full-Length

PAGE1 (Human) Recombinant Protein (P01)

Catalog # H00008712-P01

Size 25 ug, 10 ug

Applications



Specification

Product Description

Human PAGE1 full-length ORF (NP_003776.2, 1 a.a. - 146 a.a.) recombinant protein with GST-tag at N-terminal.

Sequence

MGFLRRLIYRRRPMIYVESSEESSDEQPDEVESPTQSQDSTPAEEREDEGASAAQQQEPEADS
QELVQPKTGCELGDGPDTRVCLRNEEQMKLPAEGPEPEADSQEQVHPKTGCERGDGPDVQE
LGLPNPEEVKTPEEDEGQSQP

Host

Wheat Germ (in vitro)

Theoretical MW (kDa)

42.6

Preparation Method

[in vitro wheat germ expression system](#)

Purification

Glutathione Sepharose 4 Fast Flow

Quality Control Testing

12.5% SDS-PAGE Stained with Coomassie Blue.

Storage Buffer

50 mM Tris-HCl, 10 mM reduced Glutathione, pH=8.0 in the elution buffer.

Storage Instruction

Store at -80°C. Aliquot to avoid repeated freezing and thawing.

Note

Best use within three months from the date of receipt of this protein.

Applications

- Enzyme-linked Immunoabsorbent Assay
- Western Blot (Recombinant protein)
- Antibody Production
- Protein Array

Gene Info — PAGE1

Entrez GeneID [8712](#)

GeneBank Accession# [NM_003785.3](#)

Protein Accession# [NP_003776.2](#)

Gene Name PAGE1

Gene Alias GAGE-9, GAGEB1, PAGE-1

Gene Description P antigen family, member 1 (prostate associated)

Omim ID [300288](#)

Gene Ontology [Hyperlink](#)

Gene Summary This gene belongs to a family of genes that are expressed in a variety of tumors but not in normal tissues, except for the testis. Unlike the other gene family members, this gene does not encode an antigenic peptide. Nothing is presently known about the function of this protein. [provided by RefSeq]

Other Designations G antigen, family B, 1 (prostate associated)|OTTHUMP00000032034|P antigen family, member 1
|prostate associated gene 1